

## Positionierbuchsen ohne Bund, DIN 179 A EH 23112.



### Produktbeschreibung

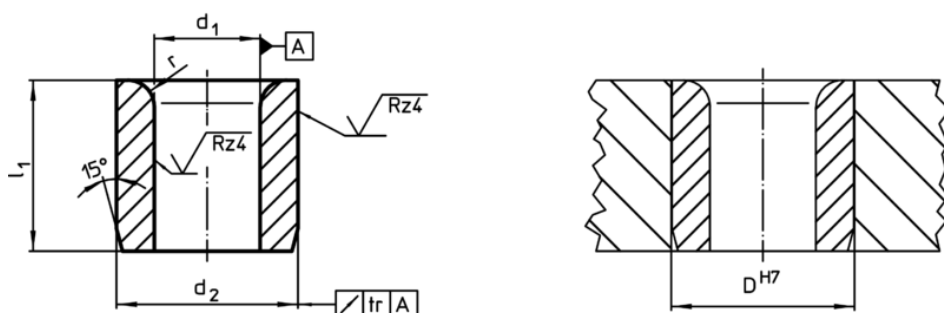
Sie dienen beispielsweise in Bohrvorrichtungen als Führung und sorgen so für die gewünschte Wiederholgenauigkeit.

Die gehärteten und geschliffenen Positionierbuchsen können als verschleißfeste Führung für Bohrer, Wellen usw. verwendet werden.

### Werkstoff


- Einsatzstahl, einsatzgehärtet


### Maßzeichnung



### Bestellinformationen

Abmessungen		d <sub>2</sub> n6	r	Aufnahmebohrung D H7	[g]	Art.-Nr.
d <sub>1</sub> F7	l <sub>1</sub> [mm]					
2,0	6	5	1,0	5	0,7	23112.0520
2,0	9	5	1,0	5	1,1	23112.0521
2,1	6	5	1,0	5	0,7	23112.0522
2,1	9	5	1,0	5	1,1	23112.0523
2,5	6	5	1,0	5	0,7	23112.0524
2,5	9	5	1,0	5	1,0	23112.0525
3,0	8	6	1,0	6	1,3	23112.0530
3,0	12	6	1,0	6	1,9	23112.0531
3,0	16	6	1,0	6	2,6	23112.0532
3,1	8	6	1,0	6	1,2	23112.0533
3,1	12	6	1,0	6	1,9	23112.0534
3,1	16	6	1,0	6	2,5	23112.0535
3,5	8	7	1,0	7	1,7	23112.0536
3,5	12	7	1,0	7	2,6	23112.0537
3,5	16	7	1,0	7	3,6	23112.0538
4,0	8	7	1,0	7	1,5	23112.0540
4,0	12	7	1,0	7	2,4	23112.0541
4,0	16	7	1,0	7	3,2	23112.0542
4,1	8	8	1,0	8	2,2	23112.0543
4,1	12	8	1,0	8	3,4	23112.0544
4,1	16	8	1,0	8	4,6	23112.0545
4,5	8	8	1,0	8	2,1	23112.0546
4,5	12	8	1,0	8	3,1	23112.0547
4,5	16	8	1,0	8	4,2	23112.0548
5,0	8	8	1,0	8	1,8	23112.0550
5,0	12	8	1,0	8	2,8	23112.0551
5,0	16	8	1,0	8	3,7	23112.0552

d <sub>1</sub> F7	Abmessungen			Aufnahmebohrung D H7 [mm]	 [g]	Art.-Nr.
	l <sub>1</sub>	d <sub>2</sub> n6	r			
	[mm]					
5,1	10	10	1,5	10	4,4	23112.0553
5,1	16	10	1,5	10	7,1	23112.0554
5,1	20	10	1,5	10	8,9	23112.0555
5,5	10	10	1,5	10	4,1	23112.0556
5,5	16	10	1,5	10	6,7	23112.0557
5,5	20	10	1,5	10	8,4	23112.0558
6,0	10	10	1,5	10	3,8	23112.0560
6,0	16	10	1,5	10	6,1	23112.0561
6,0	20	10	1,5	10	7,7	23112.0562
6,1	10	12	1,5	12	6,3	23112.0563
6,1	16	12	1,5	12	10,0	23112.0564
6,1	20	12	1,5	12	13,0	23112.0565
6,5	10	12	1,5	12	6,0	23112.0566
6,5	16	12	1,5	12	9,7	23112.0567
6,5	20	12	1,5	12	12,0	23112.0568
7,0	10	12	1,5	12	5,6	23112.0570
7,0	16	12	1,5	12	9,1	23112.0571
7,0	20	12	1,5	12	11,0	23112.0572
7,1	10	12	1,5	12	5,5	23112.0573
7,1	16	12	1,5	12	9,0	23112.0574
7,1	20	12	1,5	12	11,0	23112.0575
7,5	10	12	1,5	12	5,1	23112.0576
7,5	16	12	1,5	12	8,4	23112.0577
7,5	20	12	1,5	12	11,0	23112.0578
8,0	10	12	1,5	12	4,7	23112.0580
8,0	16	12	1,5	12	7,6	23112.0581
8,0	20	12	1,5	12	9,6	23112.0582
8,1	12	15	2,0	15	11,0	23112.0583
8,1	20	15	2,0	15	19,0	23112.0584
8,1	25	15	2,0	15	24,0	23112.0585
8,5	12	15	2,0	15	11,0	23112.0586
8,5	20	15	2,0	15	18,0	23112.0587
8,5	25	15	2,0	15	23,0	23112.0588
9,0	12	15	2,0	15	10,0	23112.0590
9,0	20	15	2,0	15	17,0	23112.0591
9,0	25	15	2,0	15	22,0	23112.0592
9,1	12	15	2,0	15	10,0	23112.0593
9,1	20	15	2,0	15	17,0	23112.0594
9,1	25	15	2,0	15	21,0	23112.0595
9,5	12	15	2,0	15	9,5	23112.0596
9,5	20	15	2,0	15	16,0	23112.0597
9,5	25	15	2,0	15	20,0	23112.0598
10,0	12	15	2,0	15	8,8	23112.0600
10,0	20	15	2,0	15	15,0	23112.0601
10,0	25	15	2,0	15	19,0	23112.0602
10,1	12	18	2,0	18	16,0	23112.0603
10,1	20	18	2,0	18	27,0	23112.0604
10,1	25	18	2,0	18	33,0	23112.0605
10,5	12	18	2,0	18	15,0	23112.0606
10,5	20	18	2,0	18	26,0	23112.0607
10,5	25	18	2,0	18	32,0	23112.0608
11,0	12	18	2,0	18	14,0	23112.0610
11,0	20	18	2,0	18	24,0	23112.0611
11,0	25	18	2,0	18	31,0	23112.0612
11,1	12	18	2,0	18	14,0	23112.0613
11,1	20	18	2,0	18	24,0	23112.0614
11,1	25	18	2,0	18	30,0	23112.0615
11,5	12	18	2,0	18	14,0	23112.0616
11,5	20	18	2,0	18	23,0	23112.0617
11,5	25	18	2,0	18	29,0	23112.0618
12,0	12	18	2,0	18	13,0	23112.0620

d <sub>1</sub> F7	Abmessungen			r	Aufnahmebohrung D H7 [mm]	 [g]	Art.-Nr.
	l <sub>1</sub> [mm]	d <sub>2</sub> n6 [mm]					
12,0	20	18		2,0	18	22,0	<a href="#">23112.0621</a>
12,0	25	18		2,0	18	27,0	<a href="#">23112.0622</a>
12,1	16	22		2,0	22	32,0	<a href="#">23112.0623</a>
12,1	28	22		2,0	22	57,0	<a href="#">23112.0624</a>
12,1	36	22		2,0	22	74,0	<a href="#">23112.0625</a>
12,5	16	22		2,0	22	31,0	<a href="#">23112.0626</a>
12,5	28	22		2,0	22	66,0	<a href="#">23112.0627</a>
12,5	36	22		2,0	22	69,0	<a href="#">23112.0628</a>
13,0	16	22		2,0	22	30,0	<a href="#">23112.0630</a>
13,0	28	22		2,0	22	53,0	<a href="#">23112.0631</a>
13,0	36	22		2,0	22	69,0	<a href="#">23112.0632</a>
14,0	16	22		2,0	22	27,0	<a href="#">23112.0640</a>
14,0	28	22		2,0	22	49,0	<a href="#">23112.0641</a>
14,0	36	22		2,0	22	63,0	<a href="#">23112.0642</a>
15,0	16	22		2,0	22	25,0	<a href="#">23112.0650</a>
15,0	28	22		2,0	22	44,0	<a href="#">23112.0651</a>
15,0	36	22		2,0	22	56,0	<a href="#">23112.0652</a>
16,0	16	26		2,0	26	45,0	<a href="#">23112.0660</a>
16,0	28	26		2,0	26	71,0	<a href="#">23112.0661</a>
16,0	36	26		2,0	26	92,0	<a href="#">23112.0662</a>
16,1	16	26		2,0	26	40,0	<a href="#">23112.0663</a>
16,1	28	26		2,0	26	71,0	<a href="#">23112.0664</a>
16,1	36	26		2,0	26	91,0	<a href="#">23112.0665</a>
16,5	16	26		2,0	26	39,0	<a href="#">23112.0666</a>
16,5	28	26		2,0	26	68,0	<a href="#">23112.0667</a>
16,5	36	26		2,0	26	88,0	<a href="#">23112.0668</a>
17,0	16	26		2,0	26	37,0	<a href="#">23112.0671</a>
17,0	28	26		2,0	26	65,0	<a href="#">23112.0672</a>
17,0	36	26		2,0	26	84,0	<a href="#">23112.0673</a>
18,0	16	26		2,0	26	33,0	<a href="#">23112.0681</a>
18,0	28	26		2,0	26	59,0	<a href="#">23112.0682</a>
18,0	36	26		2,0	26	77,0	<a href="#">23112.0683</a>
19,0	20	30		3,0	30	64,0	<a href="#">23112.0691</a>
19,0	36	30		3,0	30	117,0	<a href="#">23112.0692</a>
19,0	45	30		3,0	30	147,0	<a href="#">23112.0693</a>
20,0	20	30		3,0	30	59,0	<a href="#">23112.0701</a>
20,0	36	30		3,0	30	108,0	<a href="#">23112.0702</a>
20,0	45	30		3,0	30	136,0	<a href="#">23112.0703</a>
20,1	20	30		3,0	30	59,0	<a href="#">23112.0704</a>
20,1	36	30		3,0	30	108,0	<a href="#">23112.0705</a>
20,1	45	30		3,0	30	135,0	<a href="#">23112.0706</a>
22,0	20	30		3,0	30	49,0	<a href="#">23112.0721</a>
22,0	36	30		3,0	30	90,0	<a href="#">23112.0722</a>
22,0	45	30		3,0	30	113,0	<a href="#">23112.0723</a>
25,0	20	35		3,0	35	71,0	<a href="#">23112.0751</a>
25,0	36	35		3,0	35	130,0	<a href="#">23112.0752</a>
25,0	45	35		3,0	35	163,0	<a href="#">23112.0753</a>
30,0	25	42		3,0	42	129,0	<a href="#">23112.0801</a>
30,0	45	42		3,0	42	235,0	<a href="#">23112.0802</a>
30,0	56	42		3,0	42	293,0	<a href="#">23112.0803</a>