

Augenschrauben· DIN 444, Form B EH 22980.



Produktbeschreibung

Augenschrauben ähnlich DIN 444, jedoch als Stahlausführung mit höherer Güte 8.8. Die Ausführung aus rostfreiem Stahl A2-50 verfügt über eine Zugfestigkeit von min. 500 N/mm².

Werkstoff

- Vergütungsstahl, vergütet, Güte 8.8, schwarz
- Rostfreier Stahl 1.4301

Weiterführende Informationen

Hinweise

Sonderausführung auf Anfrage.

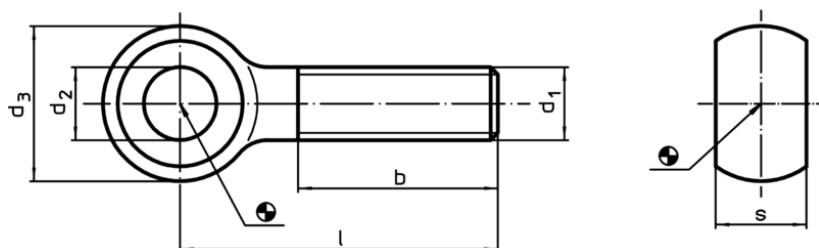
Verweise

Anziehdrehmomente siehe Anhang - Technische Daten -

Weitere Produkte


- Augenschrauben, DIN 444, Form B Güte 8.8 Präzisionsausführung

Maßzeichnung



Bestellinformationen

| d ₁ | l | Abmessungen | | | | s | [g] | Art.-Nr. |
|------------------------|-----|------------------------------|----------------|----|----|-------|------------|----------|
| | | d ₂ H9 [mm] | d ₃ | b | | | | |
| Vergütungsstahl | | | | | | | | |
| M 5 | 25 | 5 | 12 | 16 | 6 | 5,6 | 22980.0202 | |
| M 5 | 30 | 5 | 12 | 16 | 6 | 6,4 | 22980.0203 | |
| M 5 | 35 | 5 | 12 | 16 | 6 | 7,1 | 22980.0204 | |
| M 5 | 40 | 5 | 12 | 16 | 6 | 7,9 | 22980.0205 | |
| M 6 | 30 | 6 | 14 | 18 | 7 | 9,5 | 22980.0212 | |
| M 6 | 40 | 6 | 14 | 18 | 7 | 12,0 | 22980.0214 | |
| M 6 | 50 | 6 | 14 | 18 | 7 | 14,0 | 22980.0216 | |
| M 6 | 60 | 6 | 14 | 18 | 7 | 16,0 | 22980.0218 | |
| M 6 | 80 | 6 | 14 | 18 | 7 | 20,0 | 22980.0222 | |
| M 8 | 40 | 8 | 18 | 22 | 9 | 22,0 | 22980.0232 | |
| M 8 | 50 | 8 | 18 | 22 | 9 | 25,0 | 22980.0234 | |
| M 8 | 60 | 8 | 18 | 22 | 9 | 29,0 | 22980.0236 | |
| M 8 | 80 | 8 | 18 | 22 | 9 | 37,0 | 22980.0240 | |
| M 8 | 100 | 8 | 18 | 22 | 9 | 44,0 | 22980.0244 | |
| M10 | 50 | 10 | 20 | 26 | 12 | 37,0 | 22980.0252 | |
| M10 | 60 | 10 | 20 | 26 | 12 | 43,0 | 22980.0254 | |
| M10 | 75 | 10 | 20 | 26 | 12 | 52,0 | 22980.0257 | |
| M10 | 100 | 10 | 20 | 26 | 12 | 67,0 | 22980.0262 | |
| M10 | 120 | 10 | 20 | 26 | 12 | 72,0 | 22980.0266 | |
| M12 | 50 | 12 | 25 | 30 | 14 | 59,0 | 22980.0272 | |
| M12 | 60 | 12 | 25 | 30 | 14 | 68,0 | 22980.0274 | |
| M12 | 80 | 12 | 25 | 30 | 14 | 85,0 | 22980.0278 | |
| M12 | 100 | 12 | 25 | 30 | 14 | 102,0 | 22980.0282 | |
| M12 | 120 | 12 | 25 | 30 | 14 | 119,0 | 22980.0286 | |
| M16 | 60 | 16 | 32 | 38 | 17 | 128,0 | 22980.0292 | |
| M16 | 80 | 16 | 32 | 38 | 17 | 158,0 | 22980.0294 | |

| d ₁ | l | Abmessungen | | | | s |  [g] | Art.-Nr. |
|-------------------------|-----|------------------------------|----------------|----|----|-------|--|----------|
| | | d ₂ H9 [mm] | d ₃ | b | | | | |
| M16 | 100 | 16 | 32 | 38 | 17 | 190,0 | 22980.0298 | |
| M16 | 120 | 16 | 32 | 38 | 17 | 220,0 | 22980.0302 | |
| M16 | 150 | 16 | 32 | 44 | 17 | 265,0 | 22980.0308 | |
| M20 | 100 | 18 | 40 | 46 | 22 | 329,0 | 22980.0312 | |
| M20 | 120 | 18 | 40 | 46 | 22 | 371,0 | 22980.0316 | |
| M20 | 160 | 18 | 40 | 52 | 22 | 466,0 | 22980.0324 | |
| M20 | 200 | 18 | 40 | 52 | 22 | 562,0 | 22980.0332 | |
| M24 | 100 | 22 | 45 | 54 | 25 | 442,0 | 22980.0342 | |
| M24 | 120 | 22 | 45 | 54 | 25 | 512,0 | 22980.0346 | |
| M24 | 160 | 22 | 45 | 60 | 25 | 649,0 | 22980.0354 | |
| M24 | 200 | 22 | 45 | 60 | 25 | 787,0 | 22980.0362 | |
| Rostfreier Stahl | | | | | | | | |
| M 5 | 25 | 5 | 12 | 16 | 6 | 5,6 | 22980.0402 | |
| M 5 | 30 | 5 | 12 | 16 | 6 | 6,4 | 22980.0403 | |
| M 5 | 35 | 5 | 12 | 16 | 6 | 7,1 | 22980.0404 | |
| M 5 | 40 | 5 | 12 | 16 | 6 | 7,9 | 22980.0405 | |
| M 6 | 30 | 6 | 14 | 18 | 7 | 9,5 | 22980.0412 | |
| M 6 | 40 | 6 | 14 | 18 | 7 | 12,0 | 22980.0414 | |
| M 6 | 50 | 6 | 14 | 18 | 7 | 14,0 | 22980.0416 | |
| M 6 | 60 | 6 | 14 | 18 | 7 | 16,0 | 22980.0418 | |
| M 6 | 80 | 6 | 14 | 18 | 7 | 20,0 | 22980.0422 | |
| M 8 | 40 | 8 | 18 | 22 | 9 | 22,0 | 22980.0432 | |
| M 8 | 50 | 8 | 18 | 22 | 9 | 25,0 | 22980.0434 | |
| M 8 | 60 | 8 | 18 | 22 | 9 | 29,0 | 22980.0436 | |
| M 8 | 80 | 8 | 18 | 22 | 9 | 37,0 | 22980.0440 | |
| M 8 | 100 | 8 | 18 | 22 | 9 | 44,0 | 22980.0444 | |
| M10 | 50 | 10 | 20 | 26 | 12 | 37,0 | 22980.0452 | |
| M10 | 60 | 10 | 20 | 26 | 12 | 43,0 | 22980.0454 | |
| M10 | 75 | 10 | 20 | 26 | 12 | 52,0 | 22980.0457 | |
| M10 | 100 | 10 | 20 | 26 | 12 | 67,0 | 22980.0462 | |
| M10 | 120 | 10 | 20 | 26 | 12 | 72,0 | 22980.0466 | |
| M12 | 50 | 12 | 25 | 30 | 14 | 59,0 | 22980.0472 | |
| M12 | 60 | 12 | 25 | 30 | 14 | 68,0 | 22980.0474 | |
| M12 | 80 | 12 | 25 | 30 | 14 | 85,0 | 22980.0478 | |
| M12 | 100 | 12 | 25 | 30 | 14 | 102,0 | 22980.0482 | |
| M12 | 120 | 12 | 25 | 30 | 14 | 119,0 | 22980.0486 | |
| M16 | 60 | 16 | 32 | 38 | 17 | 128,0 | 22980.0492 | |
| M16 | 80 | 16 | 32 | 38 | 17 | 158,0 | 22980.0494 | |
| M16 | 100 | 16 | 32 | 38 | 17 | 190,0 | 22980.0498 | |
| M16 | 120 | 16 | 32 | 38 | 17 | 220,0 | 22980.0502 | |
| M16 | 150 | 16 | 32 | 44 | 17 | 265,0 | 22980.0508 | |
| M20 | 100 | 18 | 40 | 46 | 22 | 329,0 | 22980.0512 | |
| M20 | 120 | 18 | 40 | 46 | 22 | 371,0 | 22980.0516 | |
| M20 | 160 | 18 | 40 | 52 | 22 | 466,0 | 22980.0524 | |
| M20 | 200 | 18 | 40 | 52 | 22 | 562,0 | 22980.0532 | |
| M24 | 100 | 22 | 45 | 54 | 25 | 442,0 | 22980.0542 | |
| M24 | 120 | 22 | 45 | 54 | 25 | 512,0 | 22980.0546 | |
| M24 | 160 | 22 | 45 | 60 | 25 | 649,0 | 22980.0554 | |
| M24 | 200 | 22 | 45 | 60 | 25 | 787,0 | 22980.0562 | |