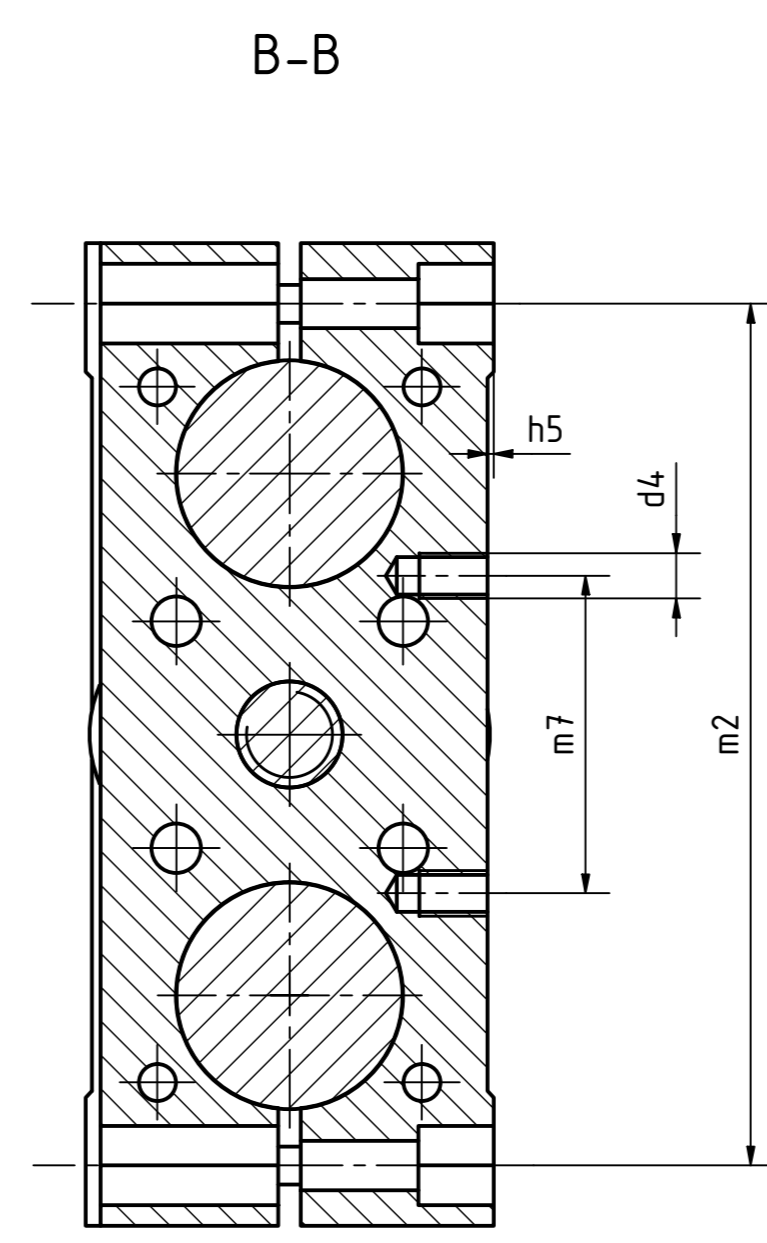
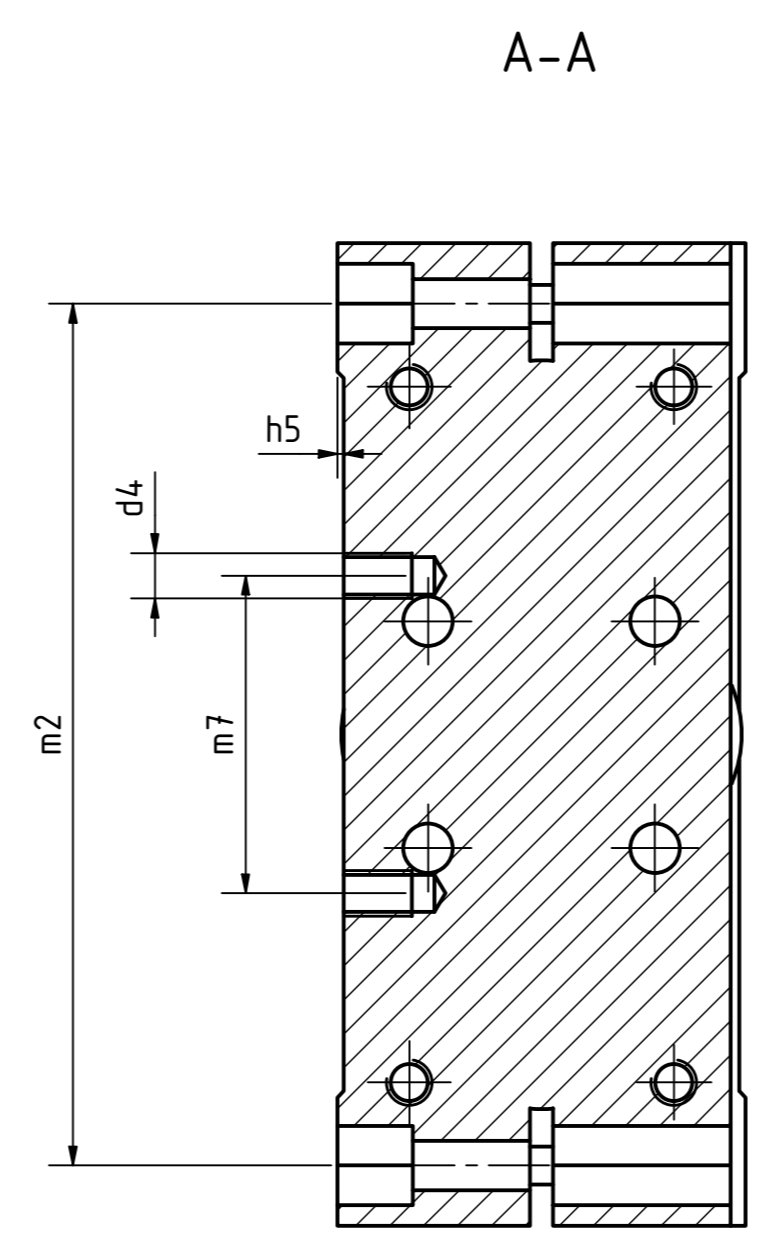
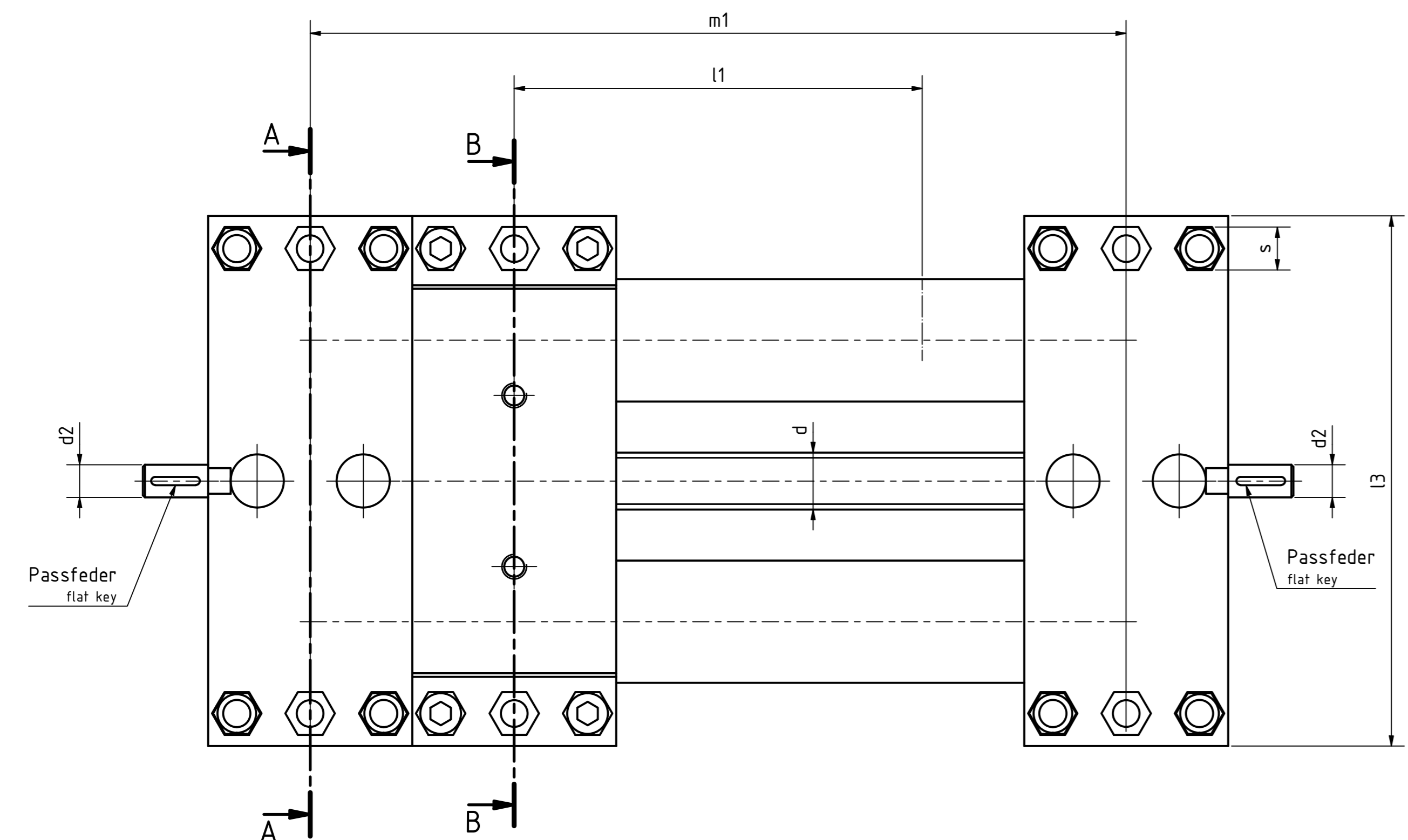
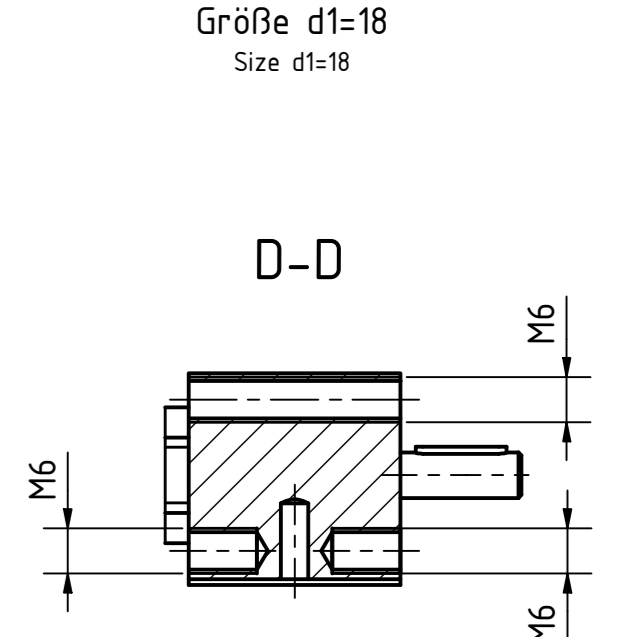
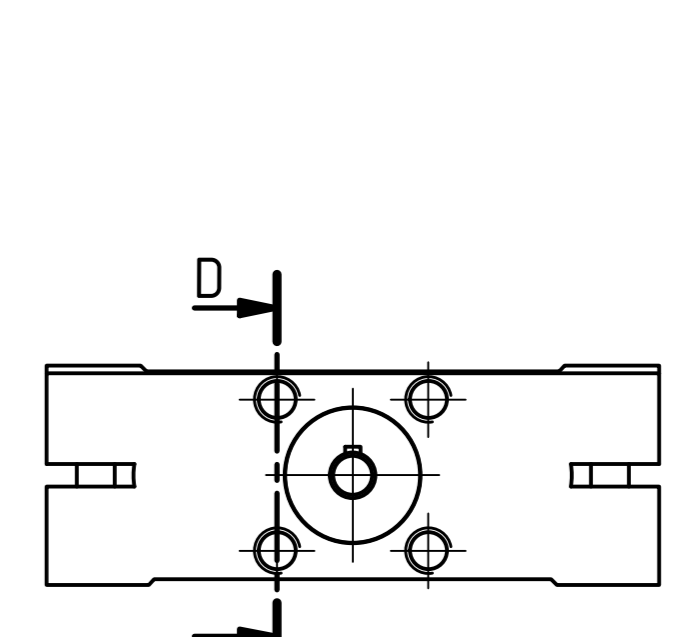
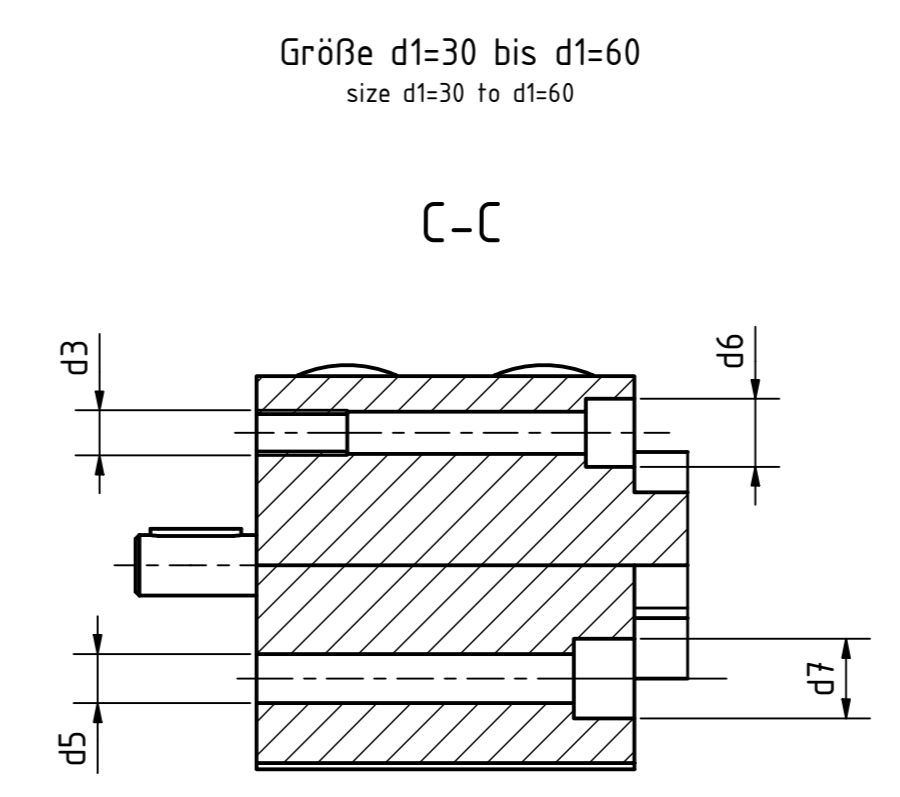
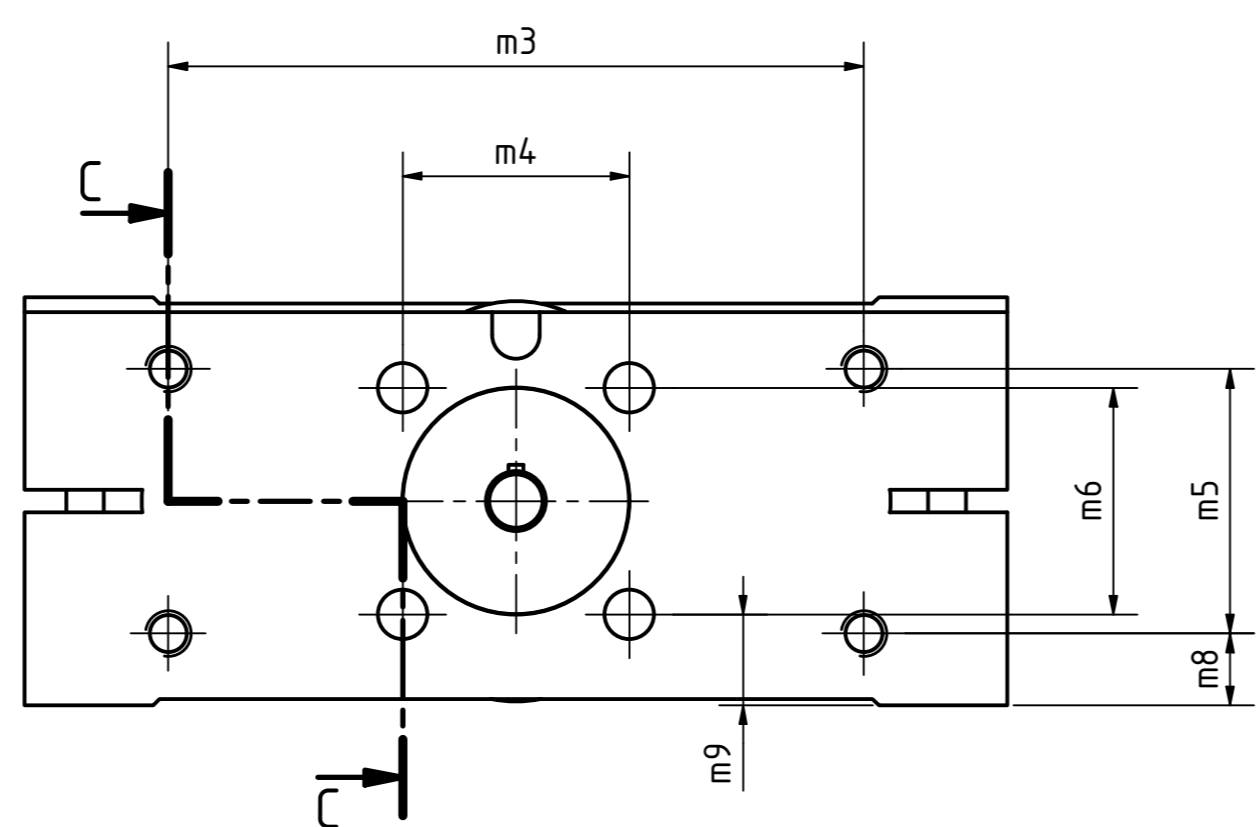
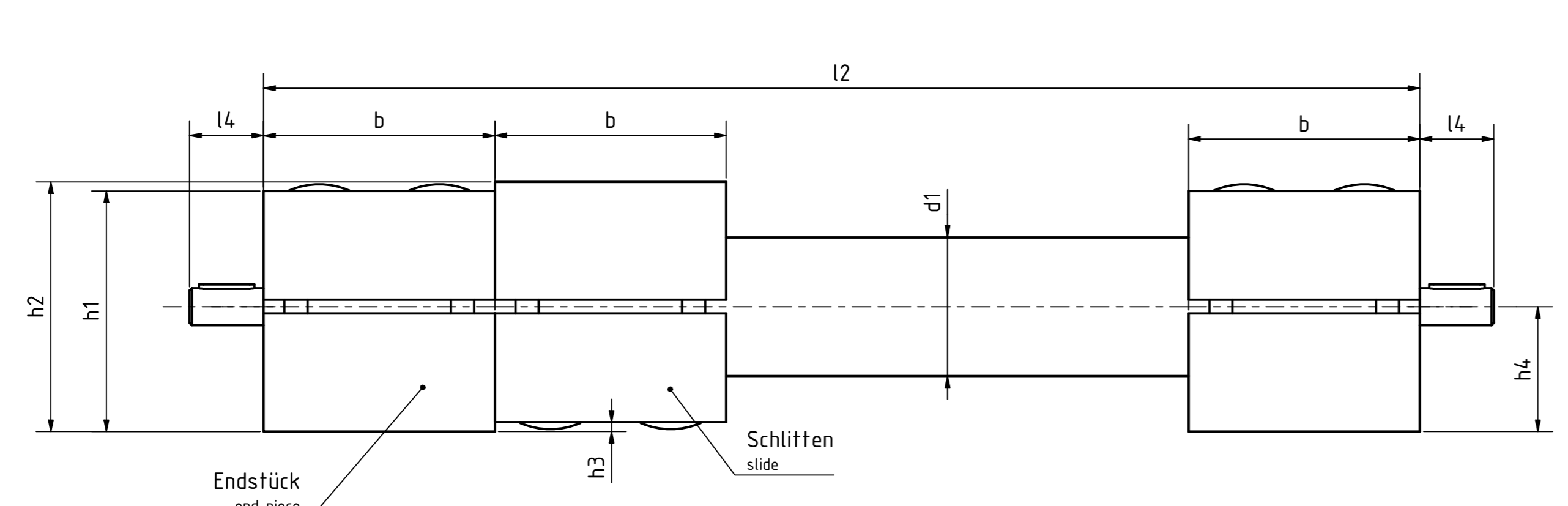
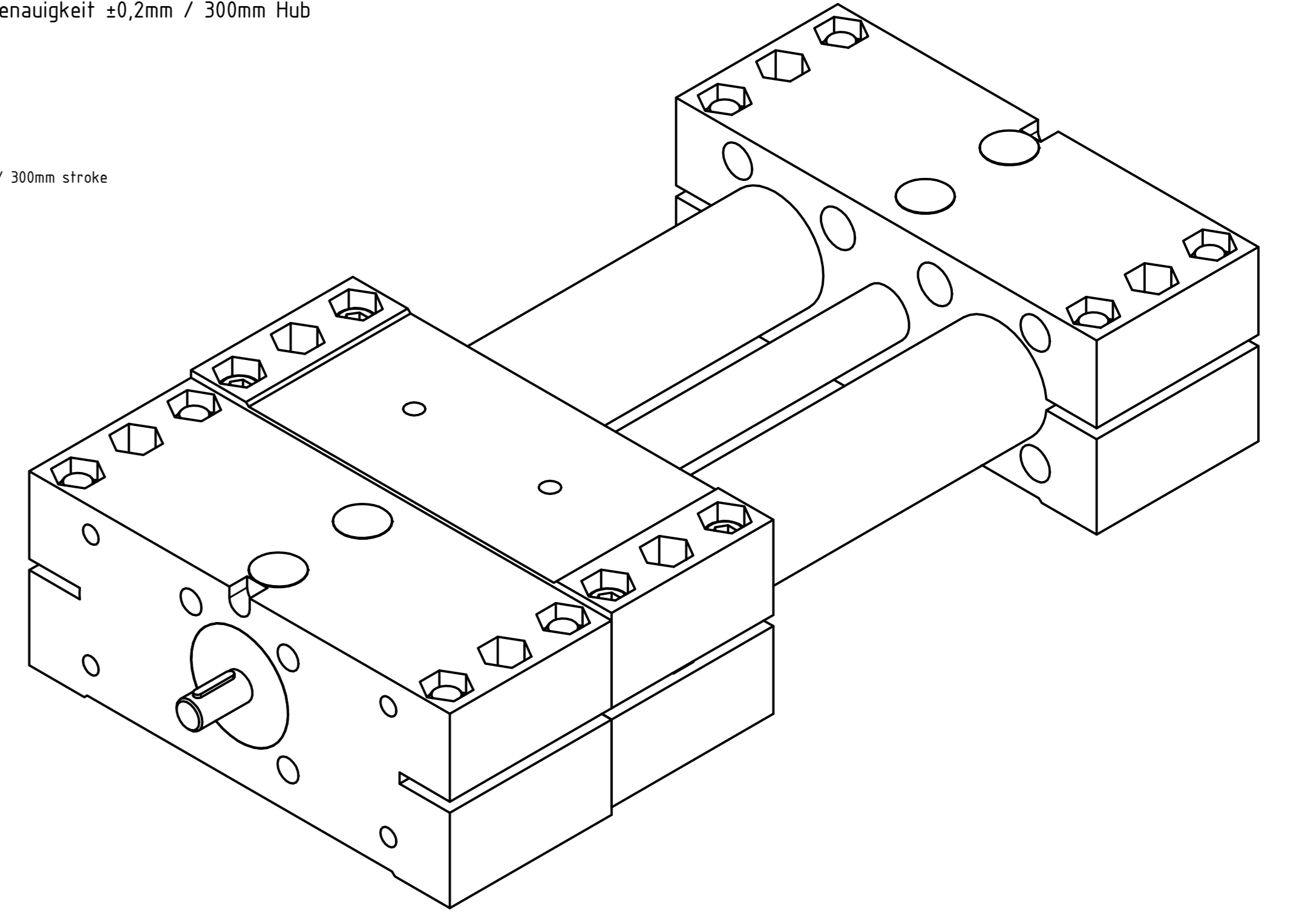


Artikel-Nr./article-no. STOXXparts	Variante/variant	d1 mm	l1 (Hub/Standardlänge stroke/standard length) mm	l1 (max. Hub/max. Auswahlänge max. stroke/max. selection length) mm	d (Gewindespindel / trapezoidal lead screw)	b mm	d2 mm	d3 mm	d4 mm	d5 mm	d6 mm	für Schrauben DIN 912 / for screws DIN 912	d7 mm	für Schrauben DIN 912 / for screws DIN 912	h1 mm	h2 mm	h3 mm	h4 mm	h5 mm	l2 (Gesamtlänge / total length) mm	l3 mm	l4 mm	m1 mm	m2 mm	m3 mm	m4 mm	m5 mm	m6 mm	m7 mm	m8 mm	m9 mm	S mm	Passfeder DIN 6885 / flat key DIN 6885
07000094001	Linksgewinde / Wellenzapfen einseitig left-hand thread / shaft journal one-sided	18	100	420	TR10x3	28	6	-	M5	5.3	-	-	-	-	28	29	1	14.5	0.75	3xb+l1	81	16	2xb+l1	68	-	20	-	20	18	-	4.5	8	A2x2x12
07000094002	Linksgewinde / Wellenzapfen beidseitig left-hand thread / shaft journals on both sides	18	100	420	TR10x3	28	6	-	M5	5.3	-	-	-	-	28	29	1	14.5	0.75	3xb+l1	81	16	2xb+l1	68	-	20	-	20	18	-	4.5	8	A2x2x12
07000094003	Rechtsgewinde / Wellenzapfen einseitig right-hand thread / shaft journal one-sided	18	100	420	TR10x3	28	6	-	M5	5.3	-	-	-	-	28	29	1	14.5	0.75	3xb+l1	81	16	2xb+l1	68	-	20	-	20	18	-	4.5	8	A2x2x12
07000094004	Rechtsgewinde / Wellenzapfen beidseitig right-hand thread / shaft journals on both sides	18	100	420	TR10x3	28	6	-	M5	5.3	-	-	-	-	28	29	1	14.5	0.75	3xb+l1	81	16	2xb+l1	68	-	20	-	20	18	-	4.5	8	A2x2x12
07000094005	Linksgewinde / Wellenzapfen einseitig left-hand thread / shaft journal one-sided	18	150	420	TR10x3	28	6	-	M5	5.3	-	-	-	-	28	29	1	14.5	0.75	3xb+l1	81	16	2xb+l1	68	-	20	-	20	18	-	4.5	8	A2x2x12
07000094006	Linksgewinde / Wellenzapfen beidseitig left-hand thread / shaft journals on both sides	18	150	420	TR10x3	28	6	-	M5	5.3	-	-	-	-	28	29	1	14.5	0.75	3xb+l1	81	16	2xb+l1	68	-	20	-	20	18	-	4.5	8	A2x2x12
07000094007	Rechtsgewinde / Wellenzapfen einseitig right-hand thread / shaft journal one-sided	18	150	420	TR10x3	28	6	-	M5	5.3	-	-	-	-	28	29	1	14.5	0.75	3xb+l1	81	16	2xb+l1	68	-	20	-	20	18	-	4.5	8	A2x2x12
07000094008	Rechtsgewinde / Wellenzapfen beidseitig right-hand thread / shaft journals on both sides	18	150	420	TR10x3	28	6	-	M5	5.3	-	-	-	-	28	29	1	14.5	0.75	3xb+l1	81	16	2xb+l1	68	-	20	-	20	18	-	4.5	8	A2x2x12
07000094009	Linksgewinde / Wellenzapfen einseitig left-hand thread / shaft journal one-sided	18	200	420	TR10x3	28	6	-	M5	5.3	-	-	-	-	28	29	1	14.5	0.75	3xb+l1	81	16	2xb+l1	68	-	20	-	20	18	-	4.5	8	A2x2x12
07000094010	Linksgewinde / Wellenzapfen beidseitig left-hand thread / shaft journals on both sides	18	200	420	TR10x3	28	6	-	M5	5.3	-	-	-	-	28	29	1	14.5	0.75	3xb+l1	81	16	2xb+l1	68	-	20	-	20	18	-	4.5	8	A2x2x12
07000094011	Rechtsgewinde / Wellenzapfen einseitig right-hand thread / shaft journal one-sided	18	200	420	TR10x3	28	6	-	M5	5.3	-	-	-	-	28	29	1	14.5	0.75	3xb+l1	81	16	2xb+l1	68	-	20	-	20	18	-	4.5	8	A2x2x12
07000094012	Rechtsgewinde / Wellenzapfen beidseitig right-hand thread / shaft journals on both sides	18	200	420	TR10x3	28	6	-	M5	5.3	-	-	-	-	28	29	1	14.5	0.75	3xb+l1	81	16	2xb+l1	68	-	20	-	20	18	-	4.5	8	A2x2x12
07000094013	Linksgewinde / Wellenzapfen einseitig left-hand thread / shaft journal one-sided	18	250	420	TR10x3	28	6	-	M5	5.3	-	-	-	-	28	29	1	14.5	0.75	3xb+l1	81	16	2xb+l1	68	-	20	-	20	18	-	4.5	8	A2x2x12
07000094014	Linksgewinde / Wellenzapfen beidseitig left-hand thread / shaft journals on both sides	18	250	420	TR10x3	28	6	-	M5	5.3	-	-	-	-	28	29	1	14.5	0.75	3xb+l1	81	16	2xb+l1	68	-	20	-	20	18	-	4.5	8	A2x2x12
07000094015	Rechtsgewinde / Wellenzapfen einseitig right-hand thread / shaft journal one-sided	18	250	420	TR10x3	28	6	-	M5	5.3	-	-	-	-	28	29	1	14.5	0.75	3xb+l1	81	16	2xb+l1	68	-	20	-	20	18	-	4.5	8	A2x2x12
07000094016	Rechtsgewinde / Wellenzapfen beidseitig right-hand thread / shaft journals on both sides	18	250	420	TR10x3	28	6	-	M5	5.3	-	-	-	-	28	29	1	14.5	0.75	3xb+l1	81	16	2xb+l1	68	-	20	-	20	18	-	4.5	8	A2x2x12
07000094017	Linksgewinde / Wellenzapfen einseitig left-hand thread / shaft journal one-sided	30	100	1500	TR14x4	50	8	M6	M6	6.5	9	M5	10.5	M6	52	54	2	27	0.85	3xb+l1	130	16	2xb+l1	114	92	30	35	30	42	9.5	12	10	A2x2x12
07000094018	Linksgewinde / Wellenzapfen beidseitig left-hand thread / shaft journals on both sides	30	100	1500	TR14x4	50	8	M6	M6	6.5	9	M5	10.5	M6	52	54	2	27	0.85	3xb+l1	130	16	2xb+l1	114	92	30	35	30	42	9.5	12	10	A2x2x12
07000094019	Rechtsgewinde / Wellenzapfen einseitig right-hand thread / shaft journal one-sided	30	100	1500	TR14x4	50	8	M6	M6	6.5	9	M5	10.5	M6	52	54	2	27	0.85	3xb+l1	130	16	2xb+l1	114	92	30	35	30	42	9.5	12	10	A2x2x12

Retgussleimutter
 Stahlführungsrohr, verchromt, DIN 2391
 Stahlzylinderschrauben DIN 912, verzinkt
 Stahlsechskantmutter DIN 985, verzinkt
 Aluminiumendstück und Aluminiumschlitten
 - kunststoffbeschichtet schwarz RAL9005, strukturmatt
 - Befestigungs- / Aufbaufäche bearbeitet blank
 Stahltrapezgewindespindel blank, kugelgelagert, Positionsgenauigkeit ±0,2mm / 300mm Hub
 Gunmetal guide rail
 Steel guide tube, chrome-plated, DIN 2391
 Steel cheese head screws DIN 912, galvanised
 Steel hexagon nut DIN 985, galvanised
 Aluminium end piece and aluminium slide
 - plastic-coated black RAL9005, textured matt
 - Mounting / mounting surface machined blank
 Steel trapezoidal threaded spindle bright, ball bearing, position accuracy ±0.2mm / 300mm stroke



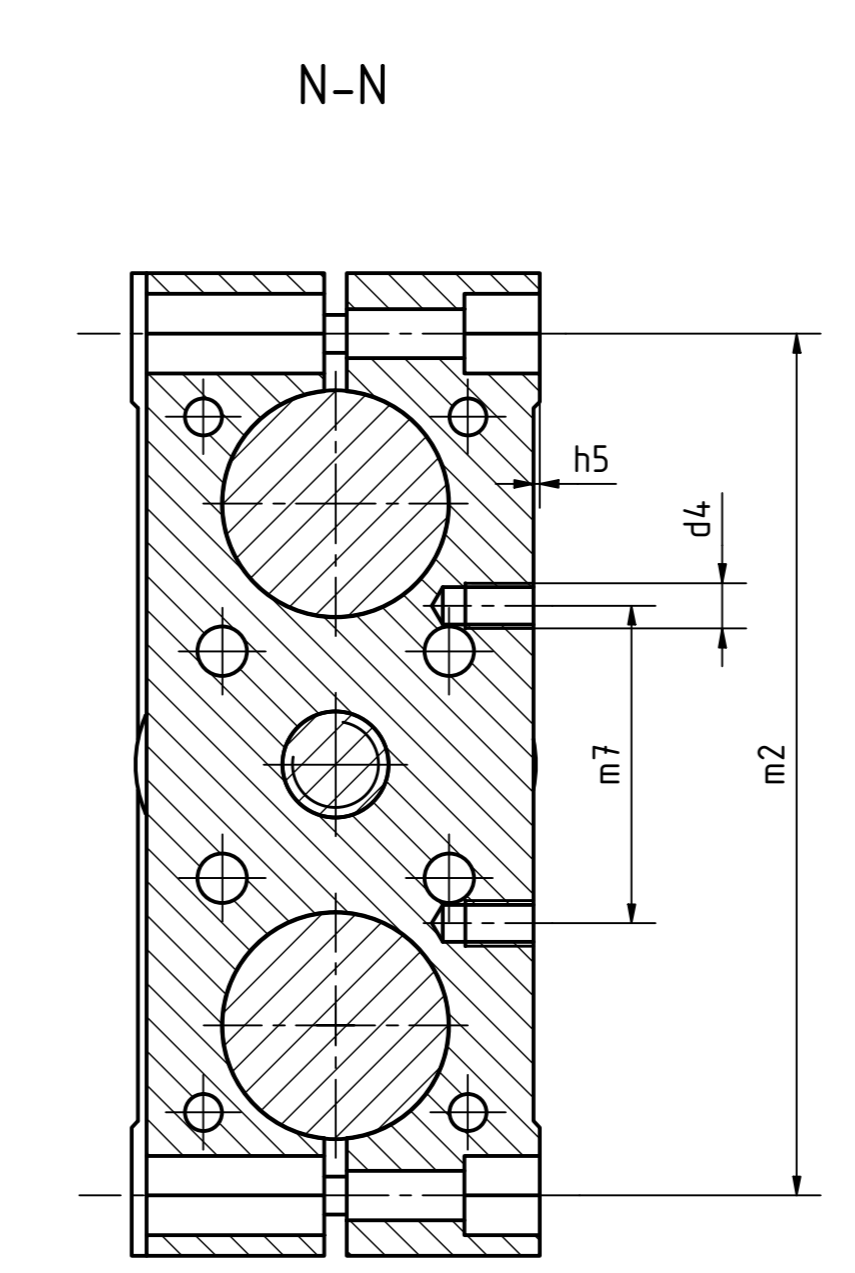
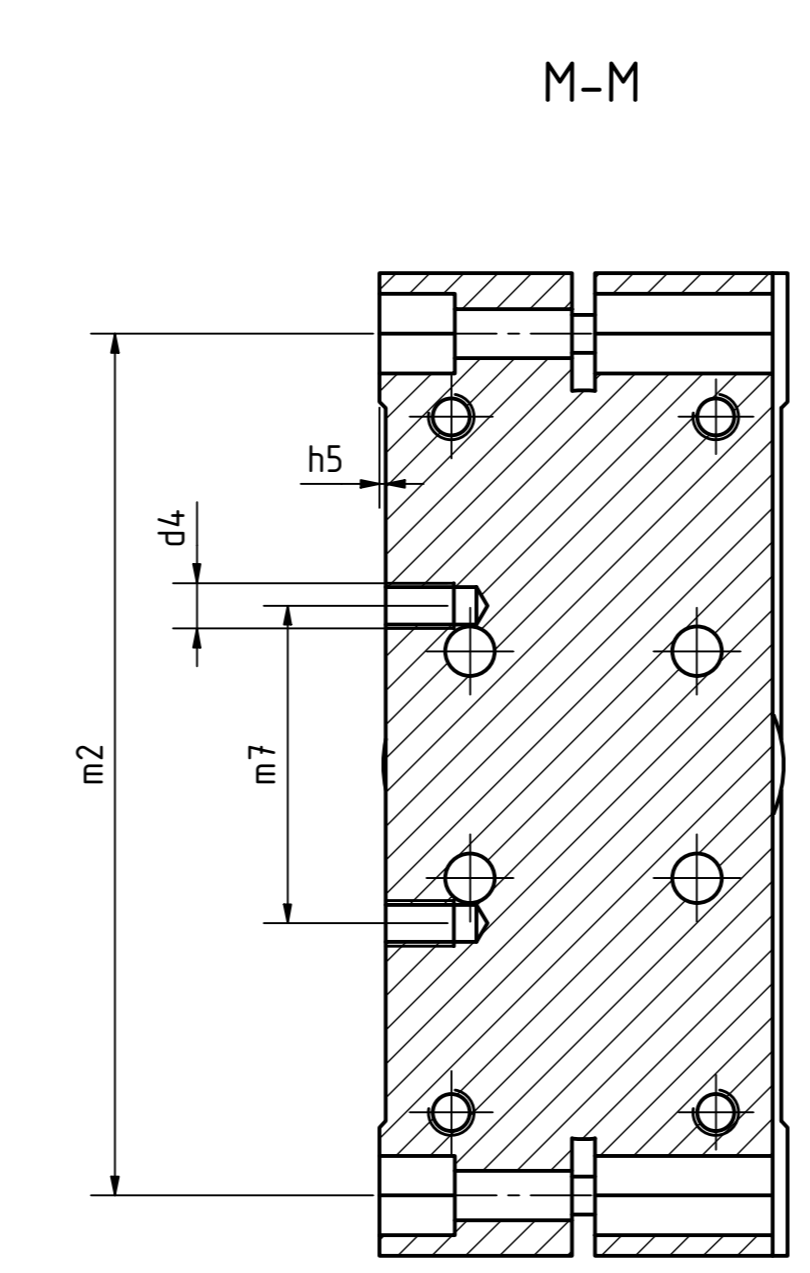
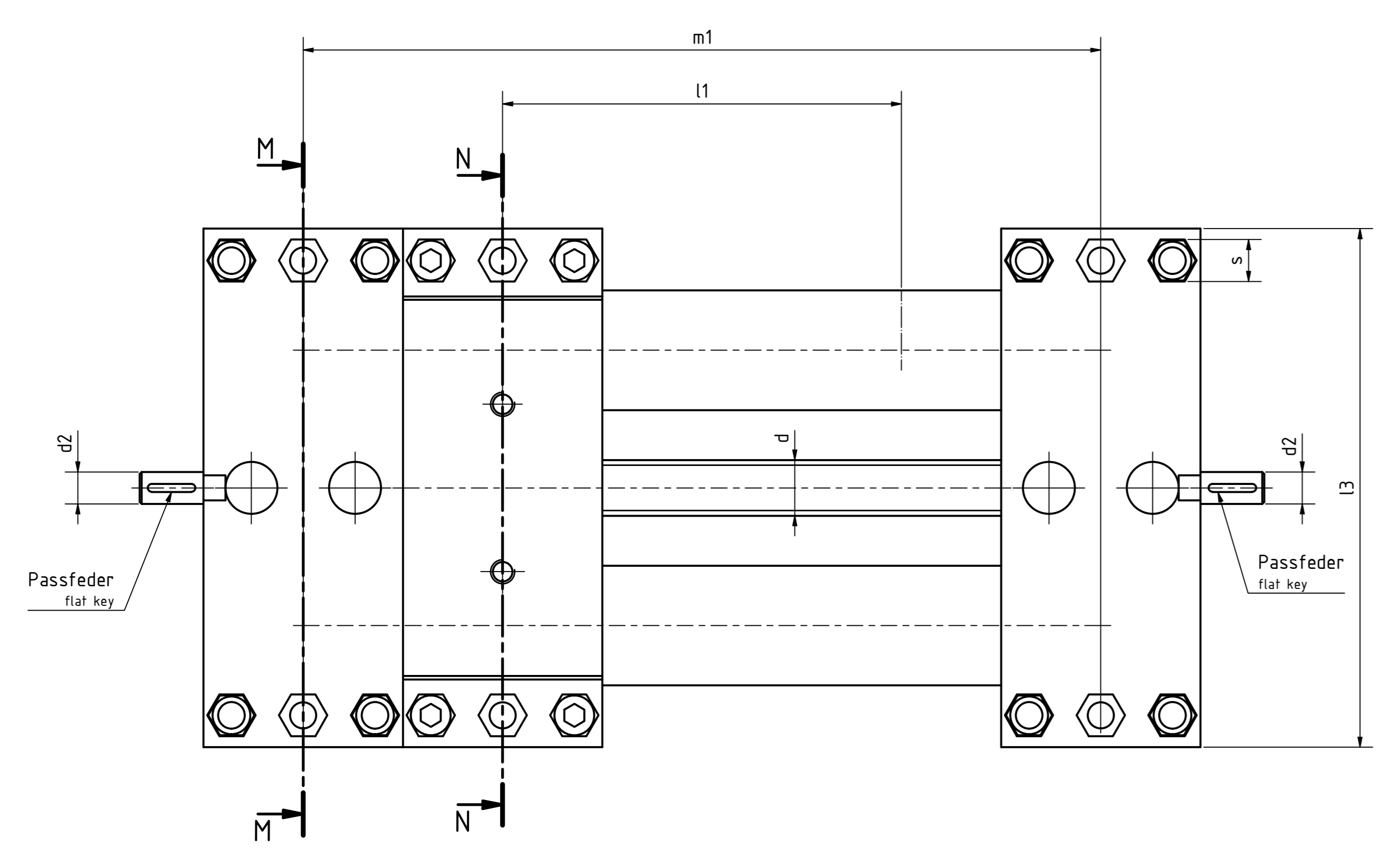
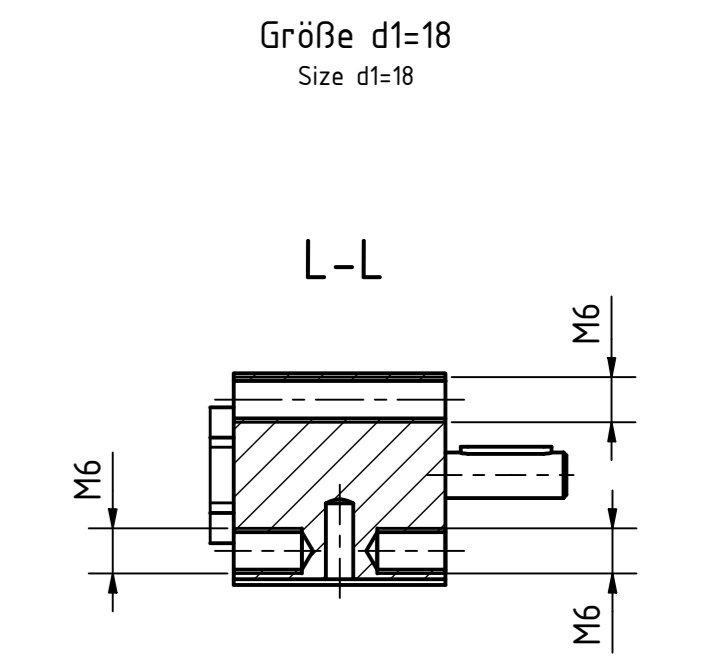
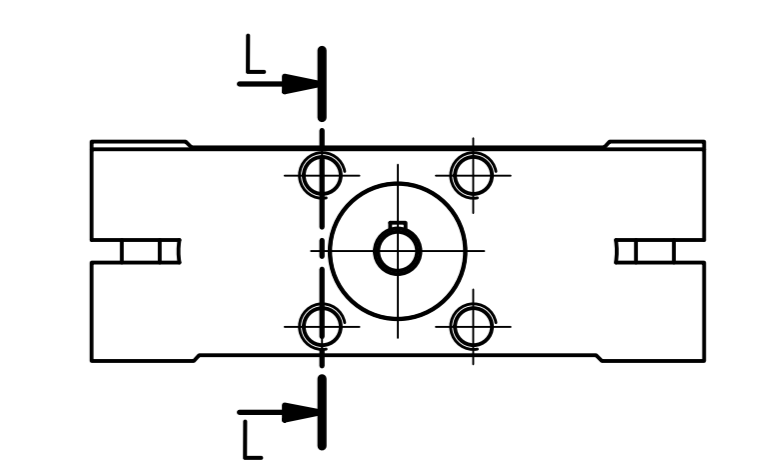
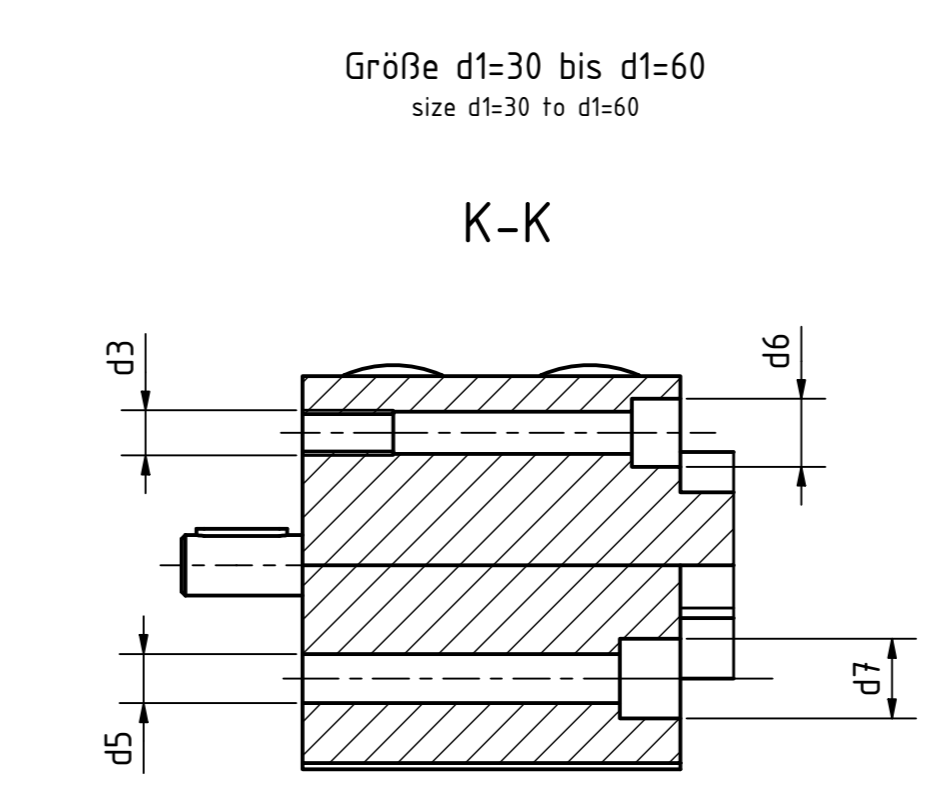
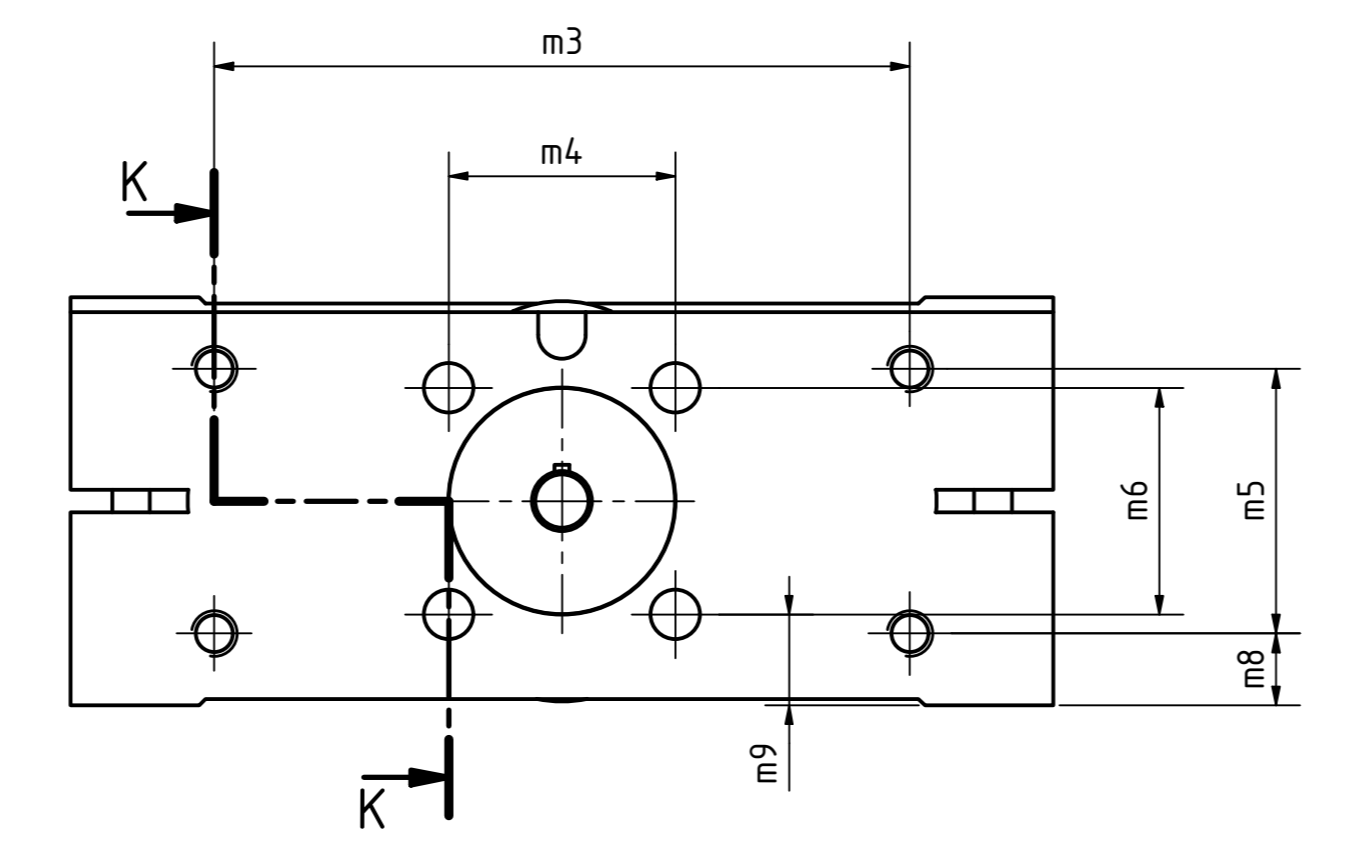
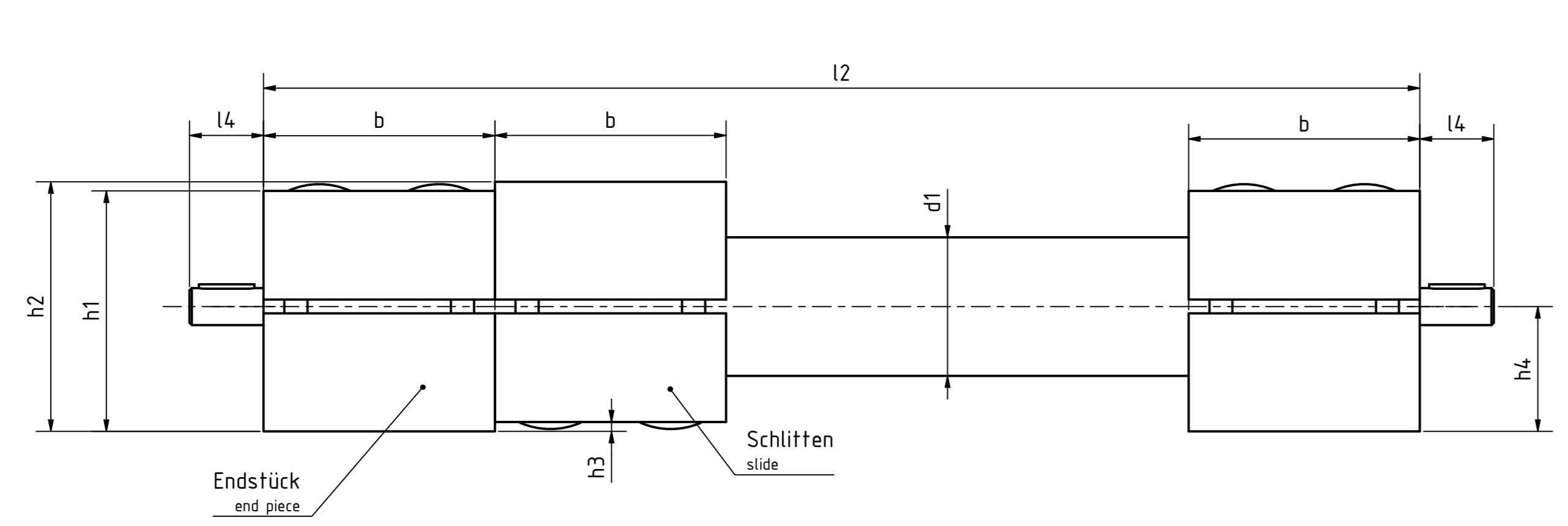
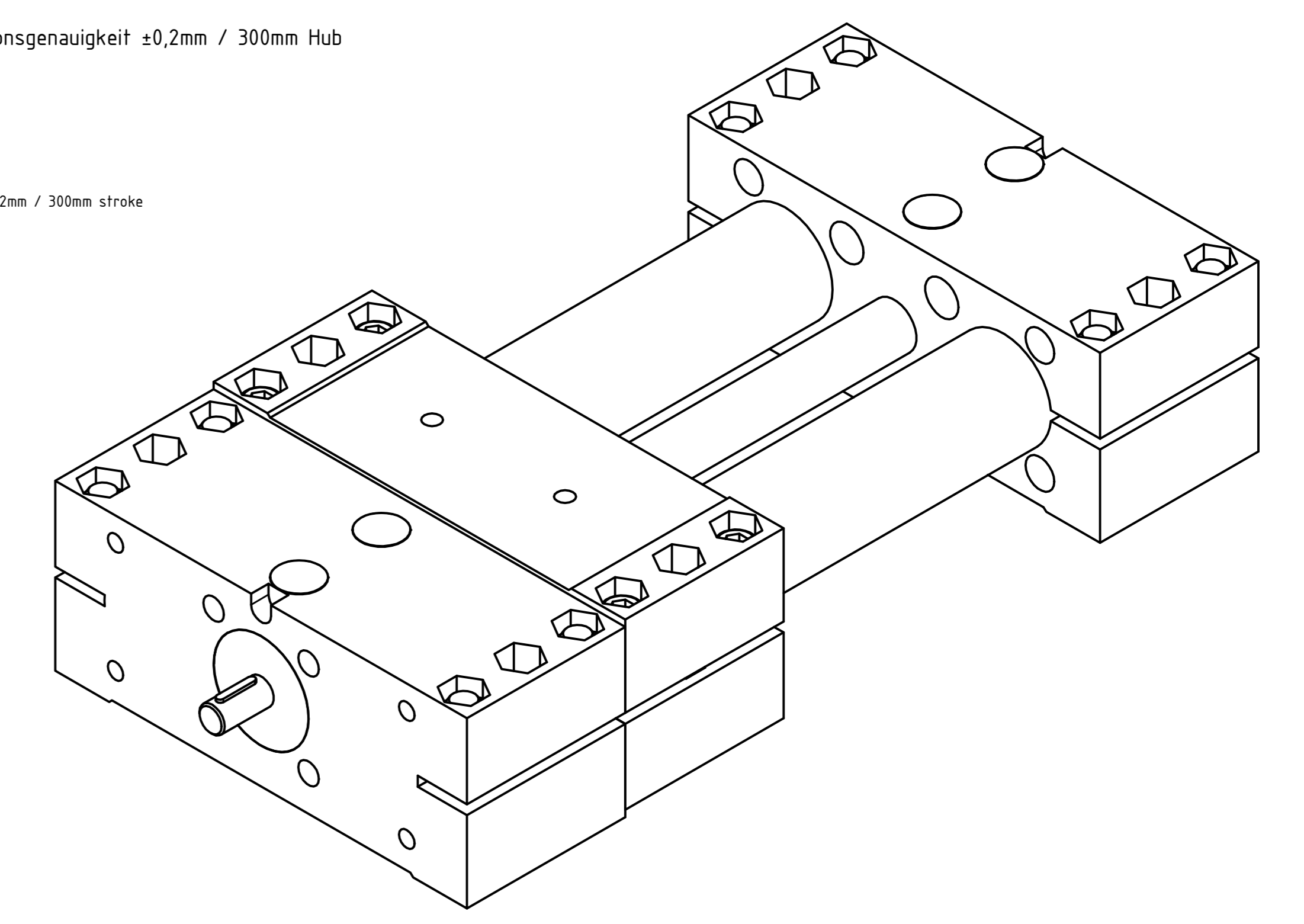
STOXXparts des Norming		tolerance DIN2768-mk	
Version	07.05.2011	Doppelrohr-Linearinheit, Einzelschlitten	
Weight		07000094000	
Scale	A0	1	
Scale	A0	scale 1:1	

Rev.	Änderungstext	Änderungsdatum	Änderungsstamm	REVISION HISTORY

Gen.

Artikel-Nr./article-no. STOXXparts	Variante/variant	d1 mm	l1 (Hub/Standardlänge stroke/standard length) mm	l1 (max. Hub/max. Auswahlänge max. stroke/max. selection length) mm	d (Gewindespindel / trapezoidal lead screw)	b mm	d2 mm	d3 mm	d4 mm	d5 mm	d6 mm	für Schrauben DIN 912 / for screws DIN 912	d7 mm	für Schrauben DIN 912 / for screws DIN 912	h1 mm	h2 mm	h3 mm	h4 mm	h5 mm	l2 (Gesamtlänge / total length) mm	l3 mm	l4 mm	m1 mm	m2 mm	m3 mm	m4 mm	m5 mm	m6 mm	m7 mm	m8 mm	m9 mm	S mm	Passfeder DIN 6885 / flat key DIN 6885
07000094020	Rechtsgewinde / Wellenzapfen beidseitig right-hand thread / shaft journals on both sides	30	100	1500	TR14x4	50	8	M6	M6	6.5	9	M5	10.5	M6	52	54	2	27	0.85	3xb+1	130	16	2xb+1	114	92	30	35	30	42	9.5	12	10	A2x2x12
07000094021	Linksgewinde / Wellenzapfen einseitig left-hand thread / shaft journal one-sided	30	150	1500	TR14x4	50	8	M6	M6	6.5	9	M5	10.5	M6	52	54	2	27	0.85	3xb+1	130	16	2xb+1	114	92	30	35	30	42	9.5	12	10	A2x2x12
07000094022	Linksgewinde / Wellenzapfen beidseitig left-hand thread / shaft journals on both sides	30	150	1500	TR14x4	50	8	M6	M6	6.5	9	M5	10.5	M6	52	54	2	27	0.85	3xb+1	130	16	2xb+1	114	92	30	35	30	42	9.5	12	10	A2x2x12
07000094023	Rechtsgewinde / Wellenzapfen einseitig right-hand thread / shaft journal one-sided	30	150	1500	TR14x4	50	8	M6	M6	6.5	9	M5	10.5	M6	52	54	2	27	0.85	3xb+1	130	16	2xb+1	114	92	30	35	30	42	9.5	12	10	A2x2x12
07000094024	Rechtsgewinde / Wellenzapfen beidseitig right-hand thread / shaft journals on both sides	30	150	1500	TR14x4	50	8	M6	M6	6.5	9	M5	10.5	M6	52	54	2	27	0.85	3xb+1	130	16	2xb+1	114	92	30	35	30	42	9.5	12	10	A2x2x12
07000094025	Linksgewinde / Wellenzapfen einseitig left-hand thread / shaft journal one-sided	30	200	1500	TR14x4	50	8	M6	M6	6.5	9	M5	10.5	M6	52	54	2	27	0.85	3xb+1	130	16	2xb+1	114	92	30	35	30	42	9.5	12	10	A2x2x12
07000094026	Linksgewinde / Wellenzapfen beidseitig left-hand thread / shaft journals on both sides	30	200	1500	TR14x4	50	8	M6	M6	6.5	9	M5	10.5	M6	52	54	2	27	0.85	3xb+1	130	16	2xb+1	114	92	30	35	30	42	9.5	12	10	A2x2x12
07000094027	Rechtsgewinde / Wellenzapfen einseitig right-hand thread / shaft journal one-sided	30	200	1500	TR14x4	50	8	M6	M6	6.5	9	M5	10.5	M6	52	54	2	27	0.85	3xb+1	130	16	2xb+1	114	92	30	35	30	42	9.5	12	10	A2x2x12
07000094028	Rechtsgewinde / Wellenzapfen beidseitig right-hand thread / shaft journals on both sides	30	200	1500	TR14x4	50	8	M6	M6	6.5	9	M5	10.5	M6	52	54	2	27	0.85	3xb+1	130	16	2xb+1	114	92	30	35	30	42	9.5	12	10	A2x2x12
07000094029	Linksgewinde / Wellenzapfen einseitig left-hand thread / shaft journal one-sided	30	300	1500	TR14x4	50	8	M6	M6	6.5	9	M5	10.5	M6	52	54	2	27	0.85	3xb+1	130	16	2xb+1	114	92	30	35	30	42	9.5	12	10	A2x2x12
07000094030	Linksgewinde / Wellenzapfen beidseitig left-hand thread / shaft journals on both sides	30	300	1500	TR14x4	50	8	M6	M6	6.5	9	M5	10.5	M6	52	54	2	27	0.85	3xb+1	130	16	2xb+1	114	92	30	35	30	42	9.5	12	10	A2x2x12
07000094031	Rechtsgewinde / Wellenzapfen einseitig right-hand thread / shaft journal one-sided	30	300	1500	TR14x4	50	8	M6	M6	6.5	9	M5	10.5	M6	52	54	2	27	0.85	3xb+1	130	16	2xb+1	114	92	30	35	30	42	9.5	12	10	A2x2x12
07000094032	Rechtsgewinde / Wellenzapfen beidseitig right-hand thread / shaft journals on both sides	30	300	1500	TR14x4	50	8	M6	M6	6.5	9	M5	10.5	M6	52	54	2	27	0.85	3xb+1	130	16	2xb+1	114	92	30	35	30	42	9.5	12	10	A2x2x12
07000094033	Linksgewinde / Wellenzapfen einseitig left-hand thread / shaft journal one-sided	40	100	2650	TR20x4	60	12	M8	M8	8.5	13.5	M6	13.5	M8	60	63	3	31.5	1.05	3xb+1	180	17	2xb+1	160	132	39	38	39	62	12.5	12	13	A4x4x12
07000094034	Linksgewinde / Wellenzapfen beidseitig left-hand thread / shaft journals on both sides	40	100	2650	TR20x4	60	12	M8	M8	8.5	13.5	M6	13.5	M8	60	63	3	31.5	1.05	3xb+1	180	17	2xb+1	160	132	39	38	39	62	12.5	12	13	A4x4x12
07000094035	Rechtsgewinde / Wellenzapfen einseitig right-hand thread / shaft journal one-sided	40	100	2650	TR20x4	60	12	M8	M8	8.5	13.5	M6	13.5	M8	60	63	3	31.5	1.05	3xb+1	180	17	2xb+1	160	132	39	38	39	62	12.5	12	13	A4x4x12
07000094036	Rechtsgewinde / Wellenzapfen beidseitig right-hand thread / shaft journals on both sides	40	100	2650	TR20x4	60	12	M8	M8	8.5	13.5	M6	13.5	M8	60	63	3	31.5	1.05	3xb+1	180	17	2xb+1	160	132	39	38	39	62	12.5	12	13	A4x4x12
07000094037	Linksgewinde / Wellenzapfen einseitig left-hand thread / shaft journal one-sided	40	150	2650	TR20x4	60	12	M8	M8	8.5	13.5	M6	13.5	M8	60	63	3	31.5	1.05	3xb+1	180	17	2xb+1	160	132	39	38	39	62	12.5	12	13	A4x4x12
07000094038	Linksgewinde / Wellenzapfen beidseitig left-hand thread / shaft journals on both sides	40	150	2650	TR20x4	60	12	M8	M8	8.5	13.5	M6	13.5	M8	60	63	3	31.5	1.05	3xb+1	180	17	2xb+1	160	132	39	38	39	62	12.5	12	13	A4x4x12

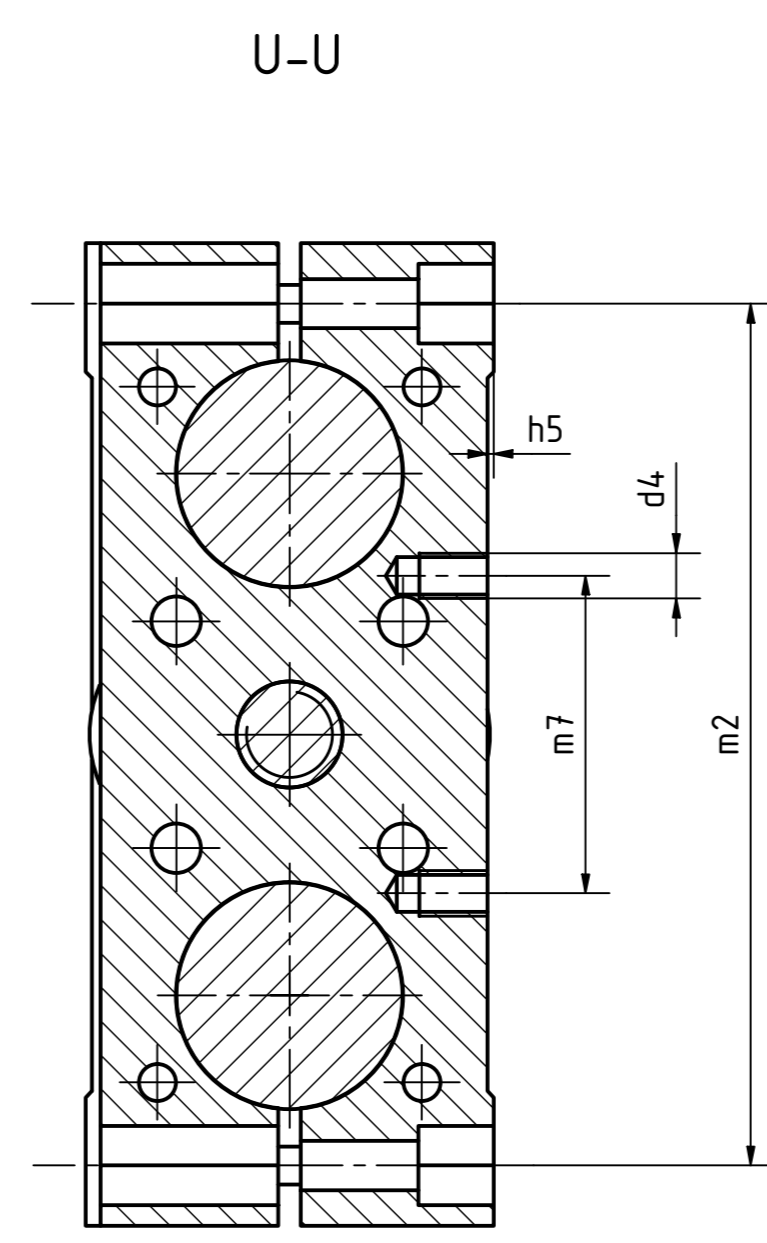
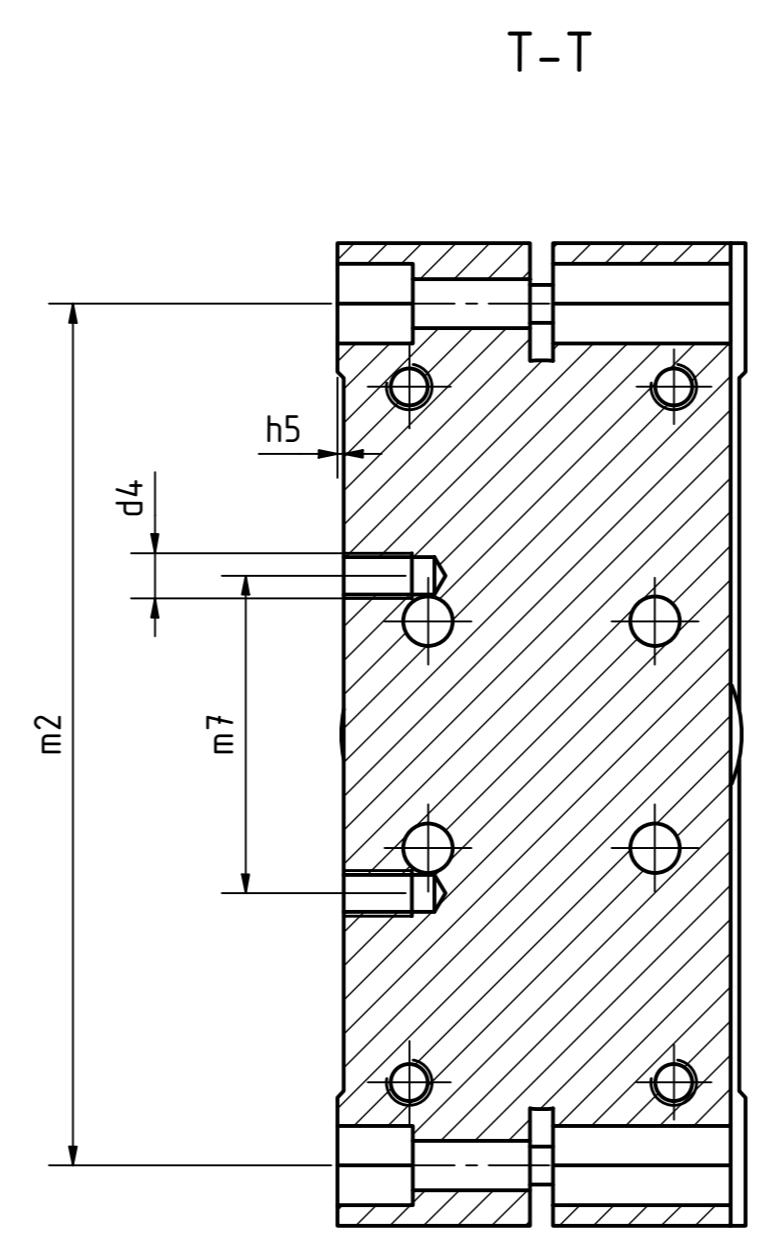
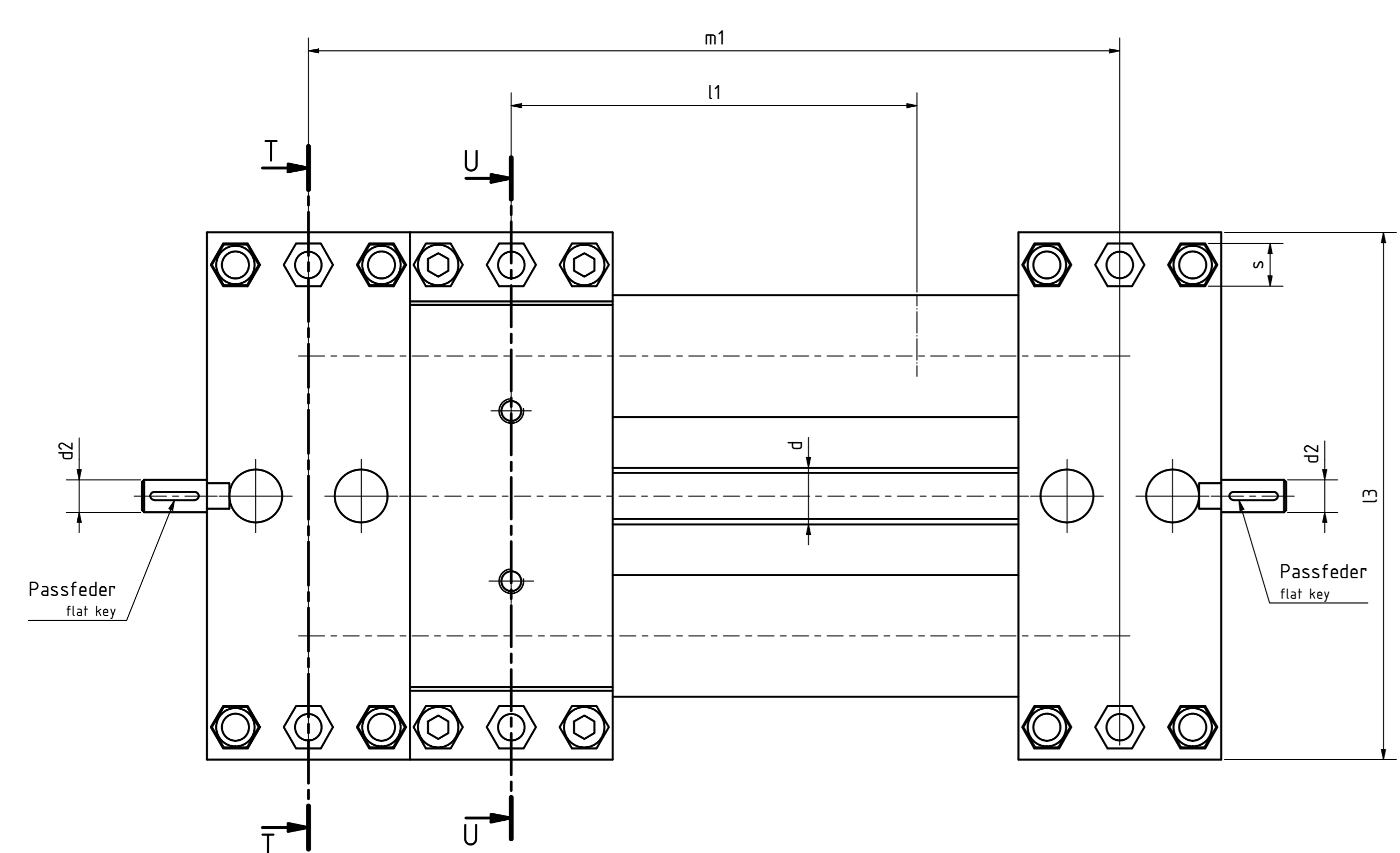
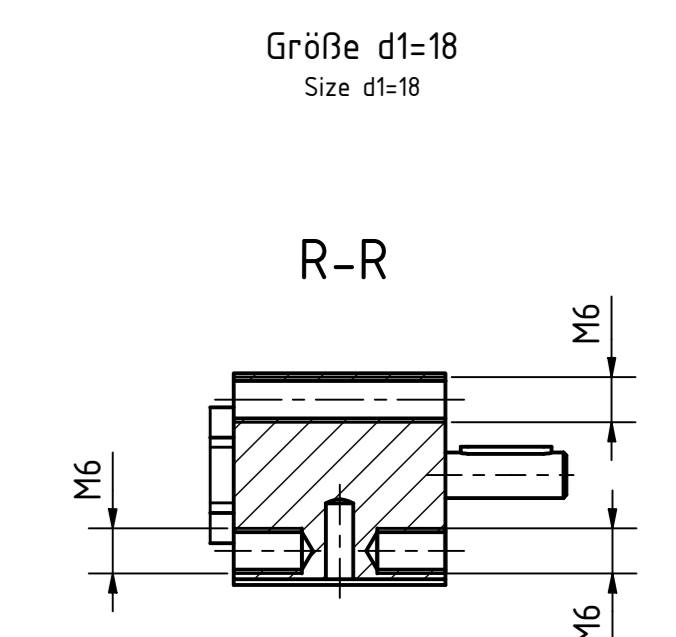
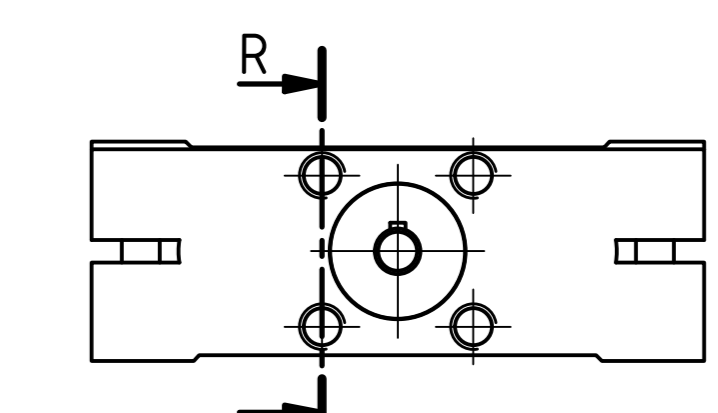
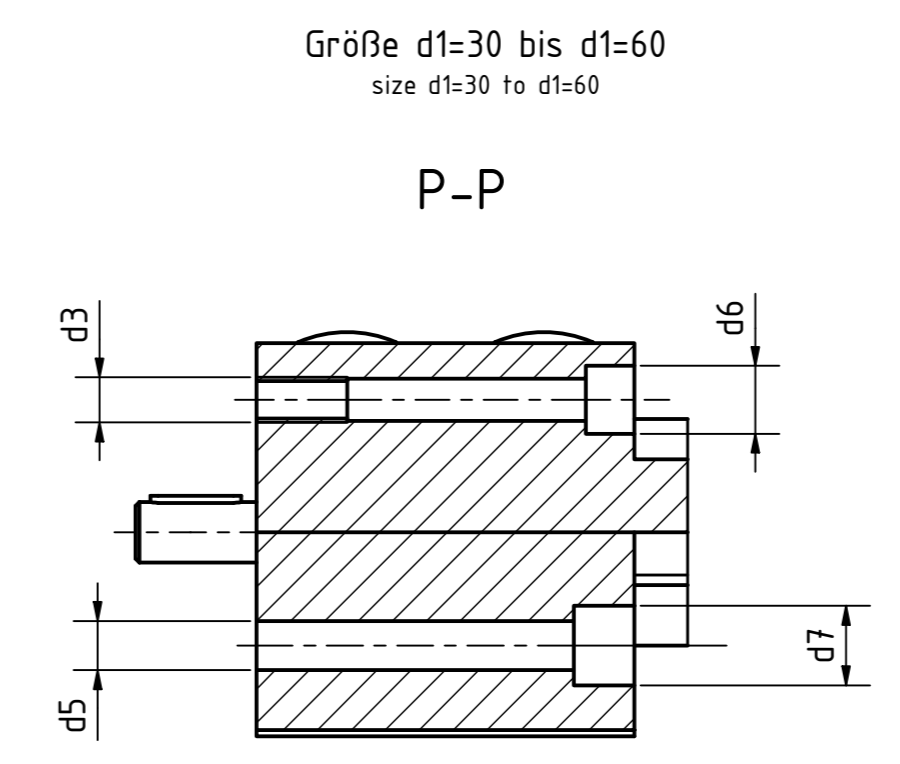
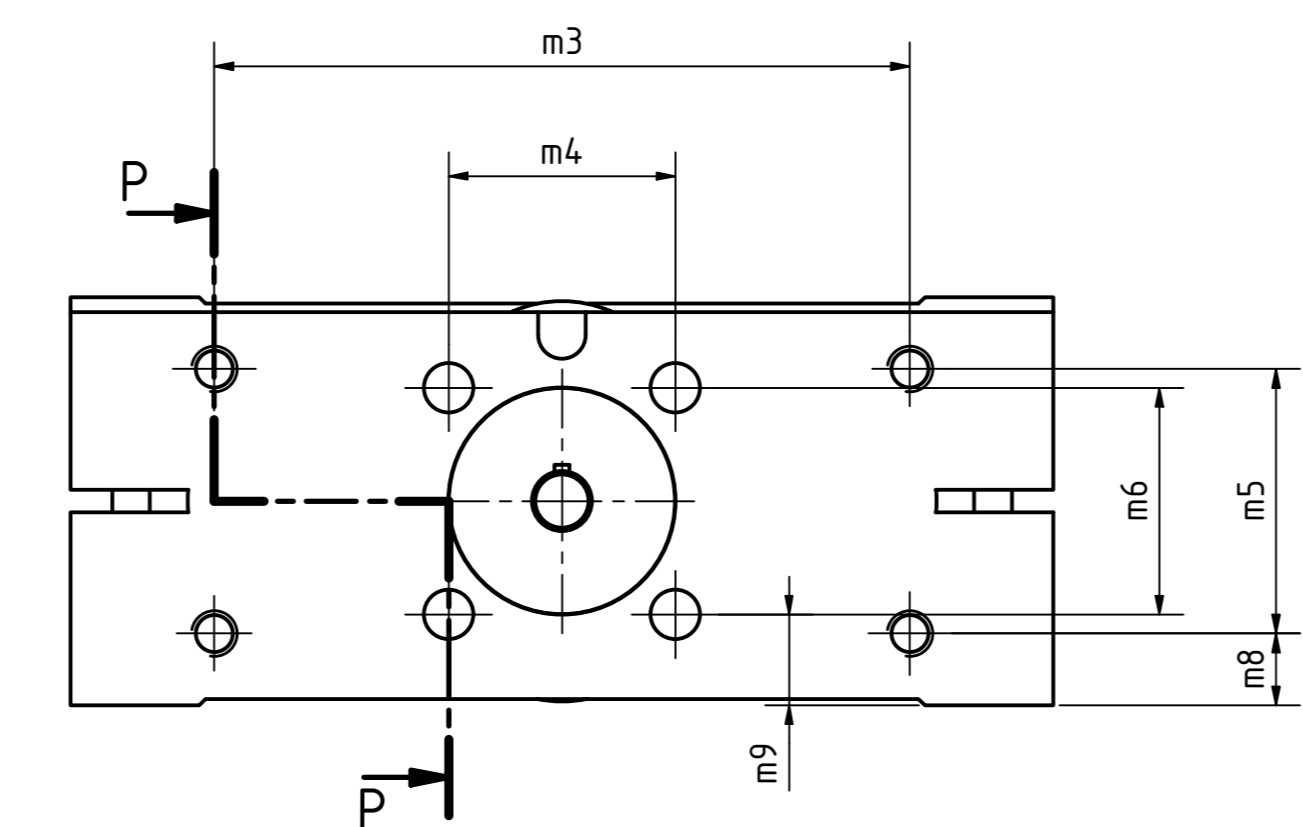
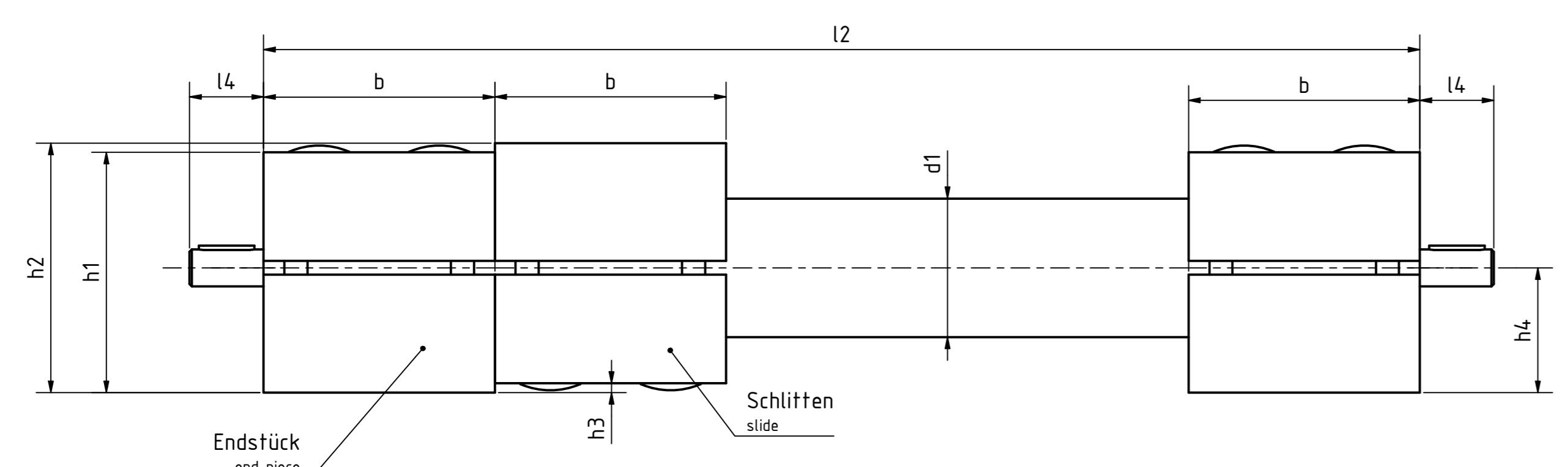
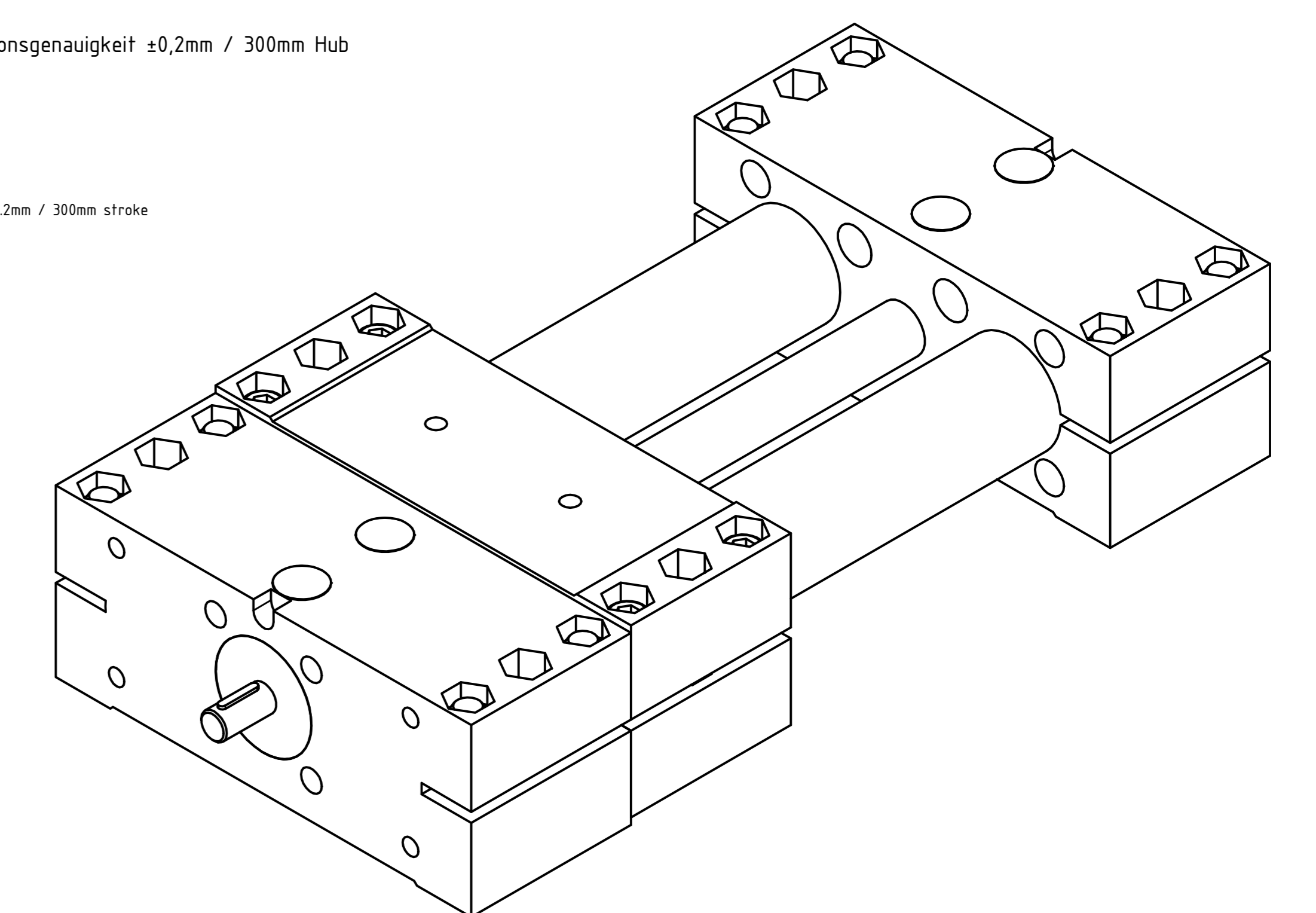
Rotgussleitmutter
Stahlführungsrohr, verchromt, DIN 2391
Stahlzylinderschrauben DIN 912, verzinkt
Stahlsechskantmutter DIN 985, verzinkt
Aluminiumendstück und Aluminiumschlitten:
- kunststoffbeschichtet schwarz RAL9005, struktur matt
- Befestigungs- / Aufbaufläche bearbeitet blank
Stahltrapezgewindespindel blank, kugellagert, Positionsgenauigkeit ±0,2mm / 300mm Hub
General: guide nut
Steel guide tube, chrome-plated, DIN 2391
Steel cheese head screws DIN 912, galvanised
Steel hexagon nut DIN 985, galvanised
Aluminum end piece and aluminum slide:
- plastic-coated black RAL9005, textured matt
- Mounting / mounting surface machined blank
Steel trapezoidal threaded spindle bright, ball bearing, position accuracy ±0.2mm / 300mm stroke



STOXXparts des Normmilitärs		tolerance DIN2768-mk
Gezeichnet 07.05.2011	Datum 07.05.2011	Zeichner Christoph Bräuer
Doppelrohr-Linearinheit, Einzelschlitten		
07000094000		2
weight =		scale 1:1

Artikel-Nr./article-no. STOXXparts	Variante/variant	d1 mm	l1 (Hub/Standardlänge stroke/standard length) mm	l1 (max. Hub/max. Auswahlänge max. stroke/max. selection length) mm	d (Gewindespindel / trapezoidal lead screw)	b mm	d2 mm	d3 mm	d4 mm	d5 mm	d6 mm	für Schrauben DIN 912 / for screws DIN 912	d7 mm	für Schrauben DIN 912 / for screws DIN 912	h1 mm	h2 mm	h3 mm	h4 mm	h5 mm	l2 (Gesamtlänge / total length) mm	l3 mm	l4 mm	m1 mm	m2 mm	m3 mm	m4 mm	m5 mm	m6 mm	m7 mm	m8 mm	m9 mm	S mm	Passfeder DIN 6885 / flat key DIN 6885
07000094039	Rechtsgewinde / Wellenzapfen einseitig right-hand thread / shaft journal one-sided	40	150	2650	TR20x4	60	12	M8	M8	8.5	13.5	M6	13.5	M8	60	63	3	31.5	1.05	3xb+l1	180	17	2xb+l1	160	132	39	38	39	62	12.5	12	13	A4x4x12
07000094040	Rechtsgewinde / Wellenzapfen beidseitig right-hand thread / shaft journals on both sides	40	150	2650	TR20x4	60	12	M8	M8	8.5	13.5	M6	13.5	M8	60	63	3	31.5	1.05	3xb+l1	180	17	2xb+l1	160	132	39	38	39	62	12.5	12	13	A4x4x12
07000094041	Linksgewinde / Wellenzapfen einseitig left-hand thread / shaft journal one-sided	40	200	2650	TR20x4	60	12	M8	M8	8.5	13.5	M6	13.5	M8	60	63	3	31.5	1.05	3xb+l1	180	17	2xb+l1	160	132	39	38	39	62	12.5	12	13	A4x4x12
07000094042	Linksgewinde / Wellenzapfen beidseitig left-hand thread / shaft journals on both sides	40	200	2650	TR20x4	60	12	M8	M8	8.5	13.5	M6	13.5	M8	60	63	3	31.5	1.05	3xb+l1	180	17	2xb+l1	160	132	39	38	39	62	12.5	12	13	A4x4x12
07000094043	Rechtsgewinde / Wellenzapfen einseitig right-hand thread / shaft journal one-sided	40	200	2650	TR20x4	60	12	M8	M8	8.5	13.5	M6	13.5	M8	60	63	3	31.5	1.05	3xb+l1	180	17	2xb+l1	160	132	39	38	39	62	12.5	12	13	A4x4x12
07000094044	Rechtsgewinde / Wellenzapfen beidseitig right-hand thread / shaft journals on both sides	40	200	2650	TR20x4	60	12	M8	M8	8.5	13.5	M6	13.5	M8	60	63	3	31.5	1.05	3xb+l1	180	17	2xb+l1	160	132	39	38	39	62	12.5	12	13	A4x4x12
07000094045	Linksgewinde / Wellenzapfen einseitig left-hand thread / shaft journal one-sided	40	300	2650	TR20x4	60	12	M8	M8	8.5	13.5	M6	13.5	M8	60	63	3	31.5	1.05	3xb+l1	180	17	2xb+l1	160	132	39	38	39	62	12.5	12	13	A4x4x12
07000094046	Linksgewinde / Wellenzapfen beidseitig left-hand thread / shaft journals on both sides	40	300	2650	TR20x4	60	12	M8	M8	8.5	13.5	M6	13.5	M8	60	63	3	31.5	1.05	3xb+l1	180	17	2xb+l1	160	132	39	38	39	62	12.5	12	13	A4x4x12
07000094047	Rechtsgewinde / Wellenzapfen einseitig right-hand thread / shaft journal one-sided	40	300	2650	TR20x4	60	12	M8	M8	8.5	13.5	M6	13.5	M8	60	63	3	31.5	1.05	3xb+l1	180	17	2xb+l1	160	132	39	38	39	62	12.5	12	13	A4x4x12
07000094048	Rechtsgewinde / Wellenzapfen beidseitig right-hand thread / shaft journals on both sides	40	300	2650	TR20x4	60	12	M8	M8	8.5	13.5	M6	13.5	M8	60	63	3	31.5	1.05	3xb+l1	180	17	2xb+l1	160	132	39	38	39	62	12.5	12	13	A4x4x12
07000094049	Linksgewinde / Wellenzapfen einseitig left-hand thread / shaft journal one-sided	50	100	2760	TR20x4	72	12	M10	M8	8.5	13.5	M8	13.5	M8	72	76	4	38	1.2	3xb+l1	206	18	2xb+l1	184	150	46	50	46	62	13	15	13	A4x4x12
07000094050	Linksgewinde / Wellenzapfen beidseitig left-hand thread / shaft journals on both sides	50	100	2760	TR20x4	72	12	M10	M8	8.5	13.5	M8	13.5	M8	72	76	4	38	1.2	3xb+l1	206	18	2xb+l1	184	150	46	50	46	62	13	15	13	A4x4x12
07000094051	Rechtsgewinde / Wellenzapfen einseitig right-hand thread / shaft journal one-sided	50	100	2760	TR20x4	72	12	M10	M8	8.5	13.5	M8	13.5	M8	72	76	4	38	1.2	3xb+l1	206	18	2xb+l1	184	150	46	50	46	62	13	15	13	A4x4x12
07000094052	Rechtsgewinde / Wellenzapfen beidseitig right-hand thread / shaft journals on both sides	50	100	2760	TR20x4	72	12	M10	M8	8.5	13.5	M8	13.5	M8	72	76	4	38	1.2	3xb+l1	206	18	2xb+l1	184	150	46	50	46	62	13	15	13	A4x4x12
07000094053	Linksgewinde / Wellenzapfen einseitig left-hand thread / shaft journal one-sided	50	150	2760	TR20x4	72	12	M10	M8	8.5	13.5	M8	13.5	M8	72	76	4	38	1.2	3xb+l1	206	18	2xb+l1	184	150	46	50	46	62	13	15	13	A4x4x12
07000094054	Linksgewinde / Wellenzapfen beidseitig left-hand thread / shaft journals on both sides	50	150	2760	TR20x4	72	12	M10	M8	8.5	13.5	M8	13.5	M8	72	76	4	38	1.2	3xb+l1	206	18	2xb+l1	184	150	46	50	46	62	13	15	13	A4x4x12
07000094055	Rechtsgewinde / Wellenzapfen einseitig right-hand thread / shaft journal one-sided	50	150	2760	TR20x4	72	12	M10	M8	8.5	13.5	M8	13.5	M8	72	76	4	38	1.2	3xb+l1	206	18	2xb+l1	184	150	46	50	46	62	13	15	13	A4x4x12
07000094056	Rechtsgewinde / Wellenzapfen beidseitig right-hand thread / shaft journals on both sides	50	150	2760	TR20x4	72	12	M10	M8	8.5	13.5	M8	13.5	M8	72	76	4	38	1.2	3xb+l1	206	18	2xb+l1	184	150	46	50	46	62	13	15	13	A4x4x12
07000094057	Linksgewinde / Wellenzapfen einseitig left-hand thread / shaft journal one-sided	50	200	2760	TR20x4	72	12	M10	M8	8.5	13.5	M8	13.5	M8	72	76	4	38	1.2	3xb+l1	206	18	2xb+l1	184	150	46	50	46	62	13	15	13	A4x4x12

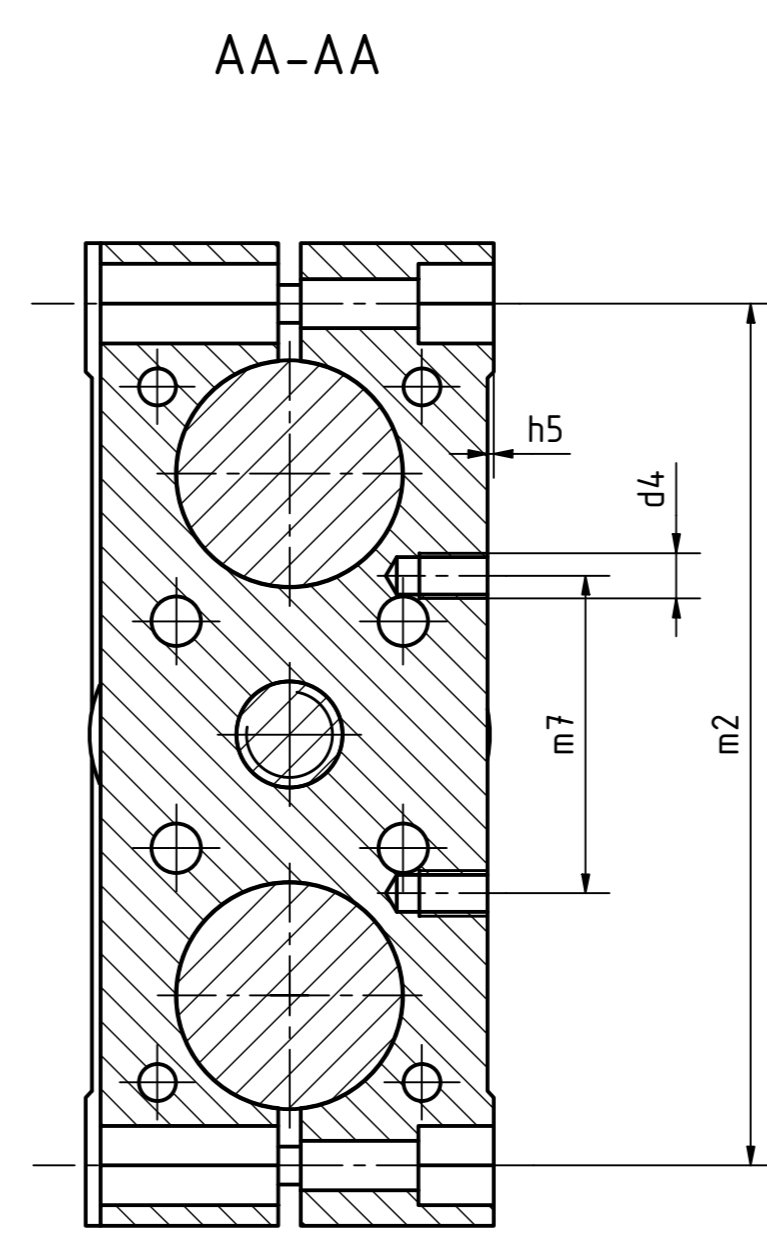
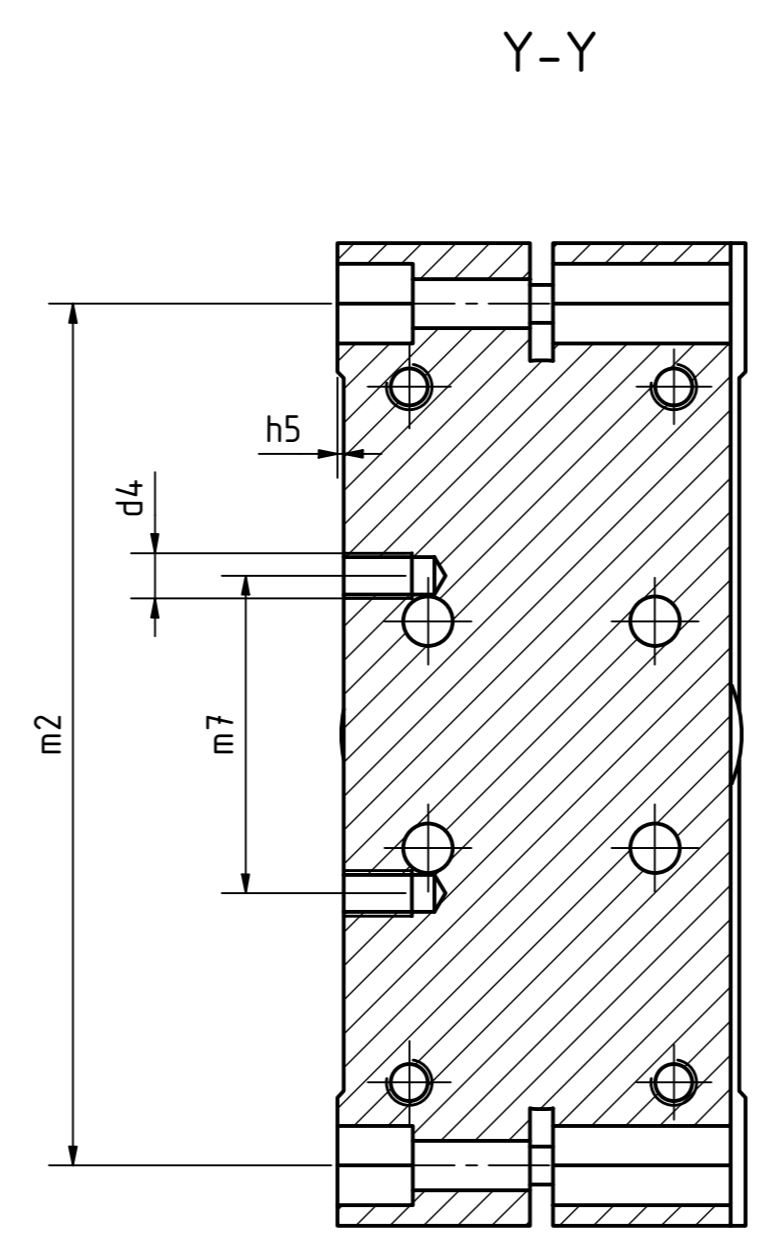
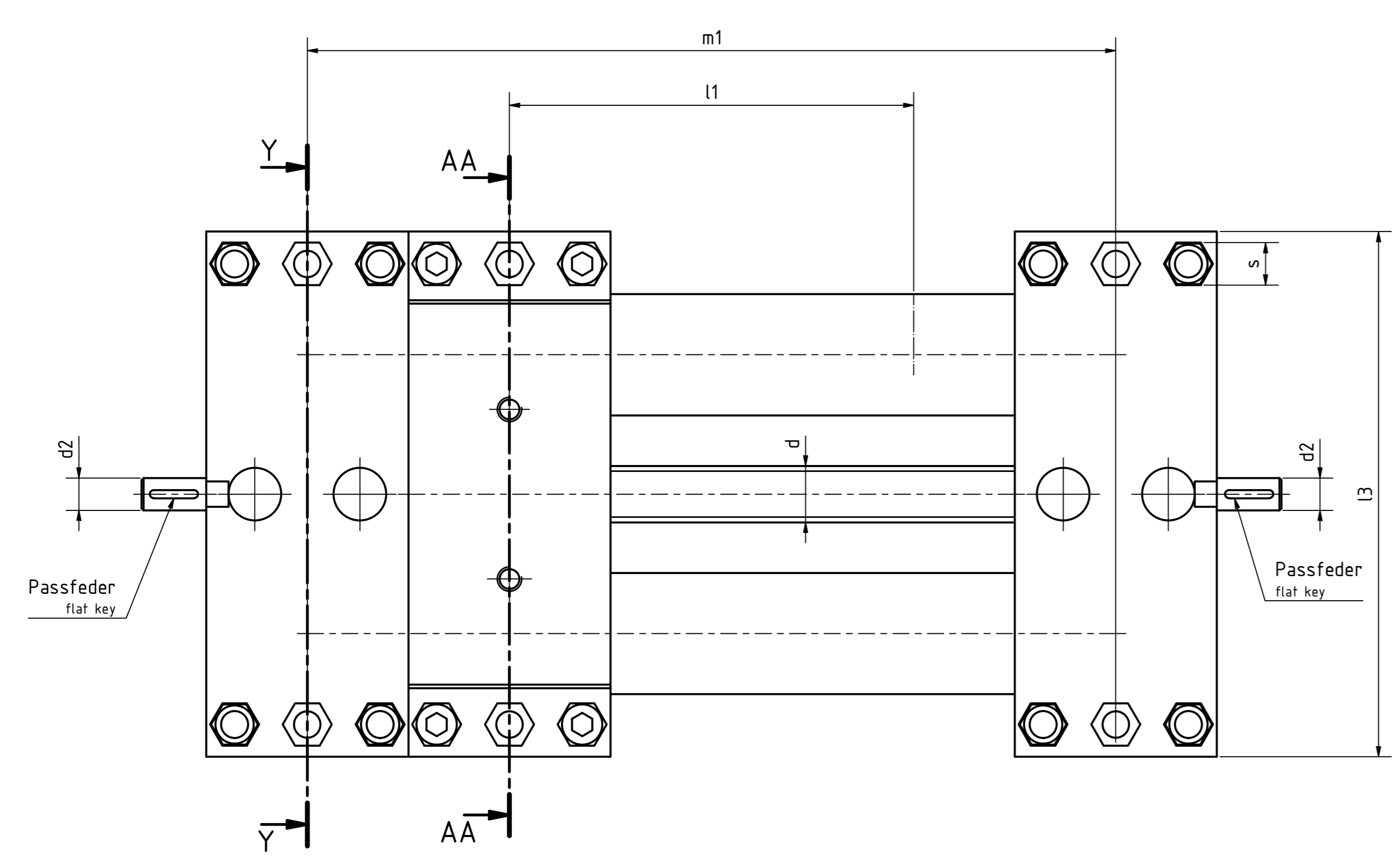
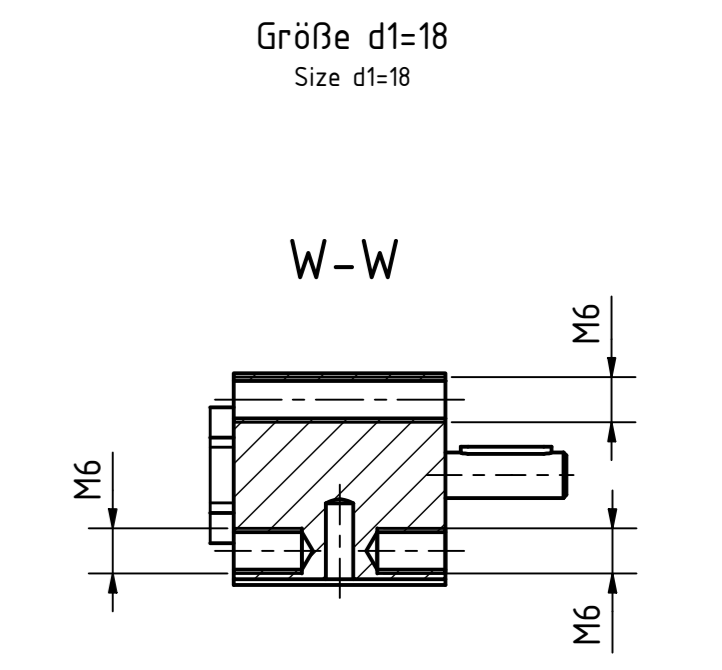
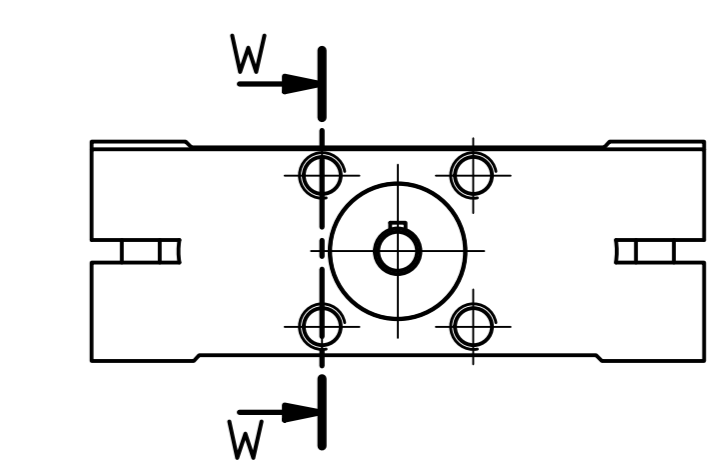
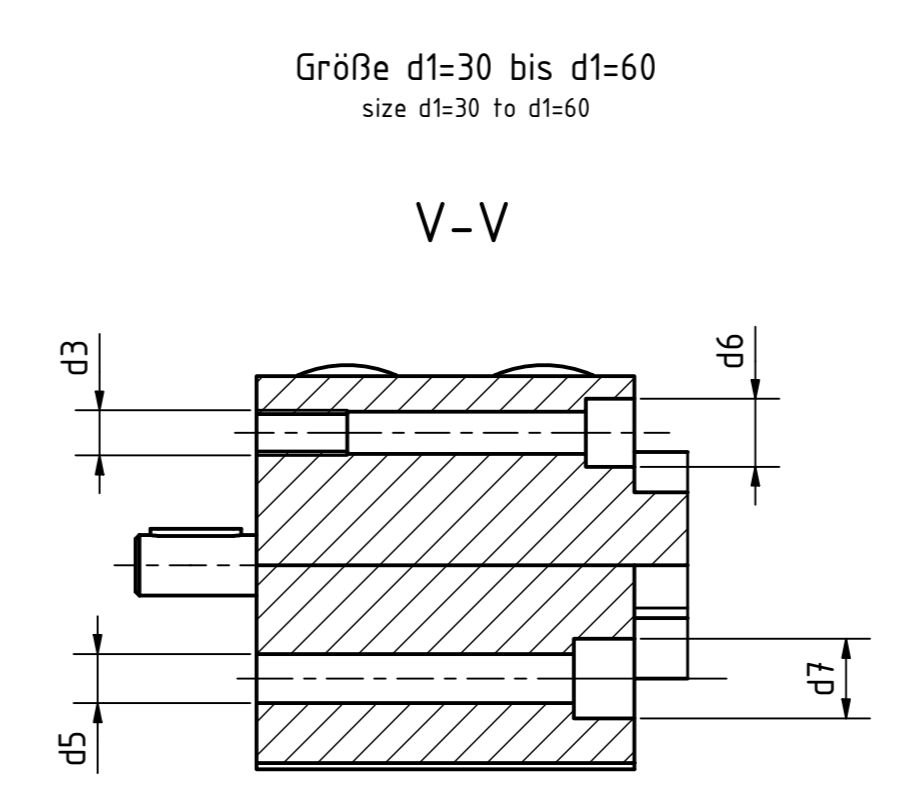
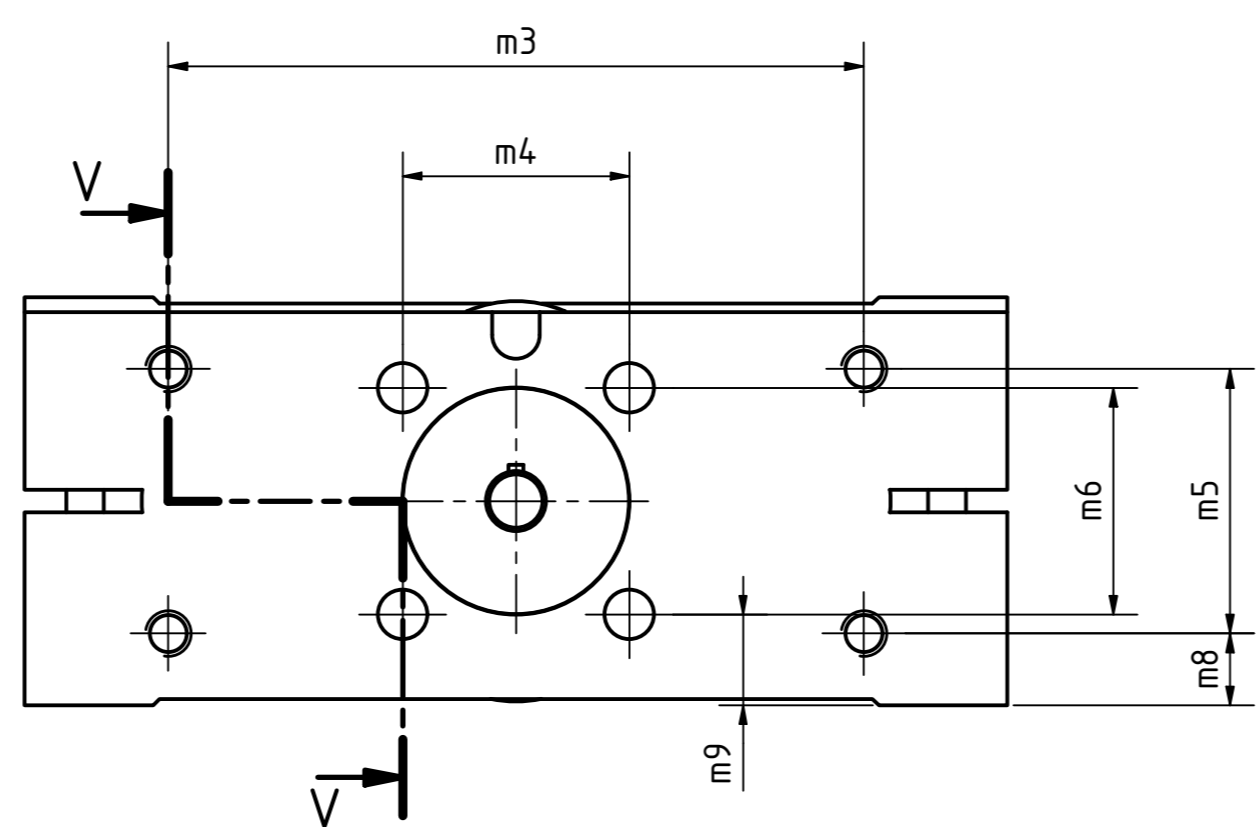
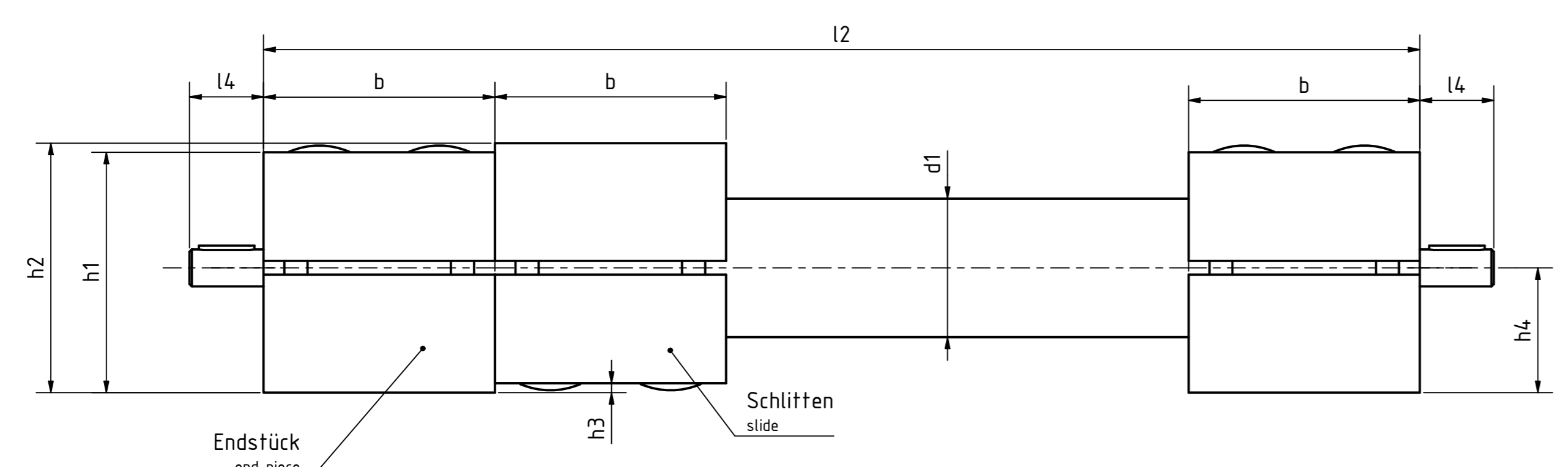
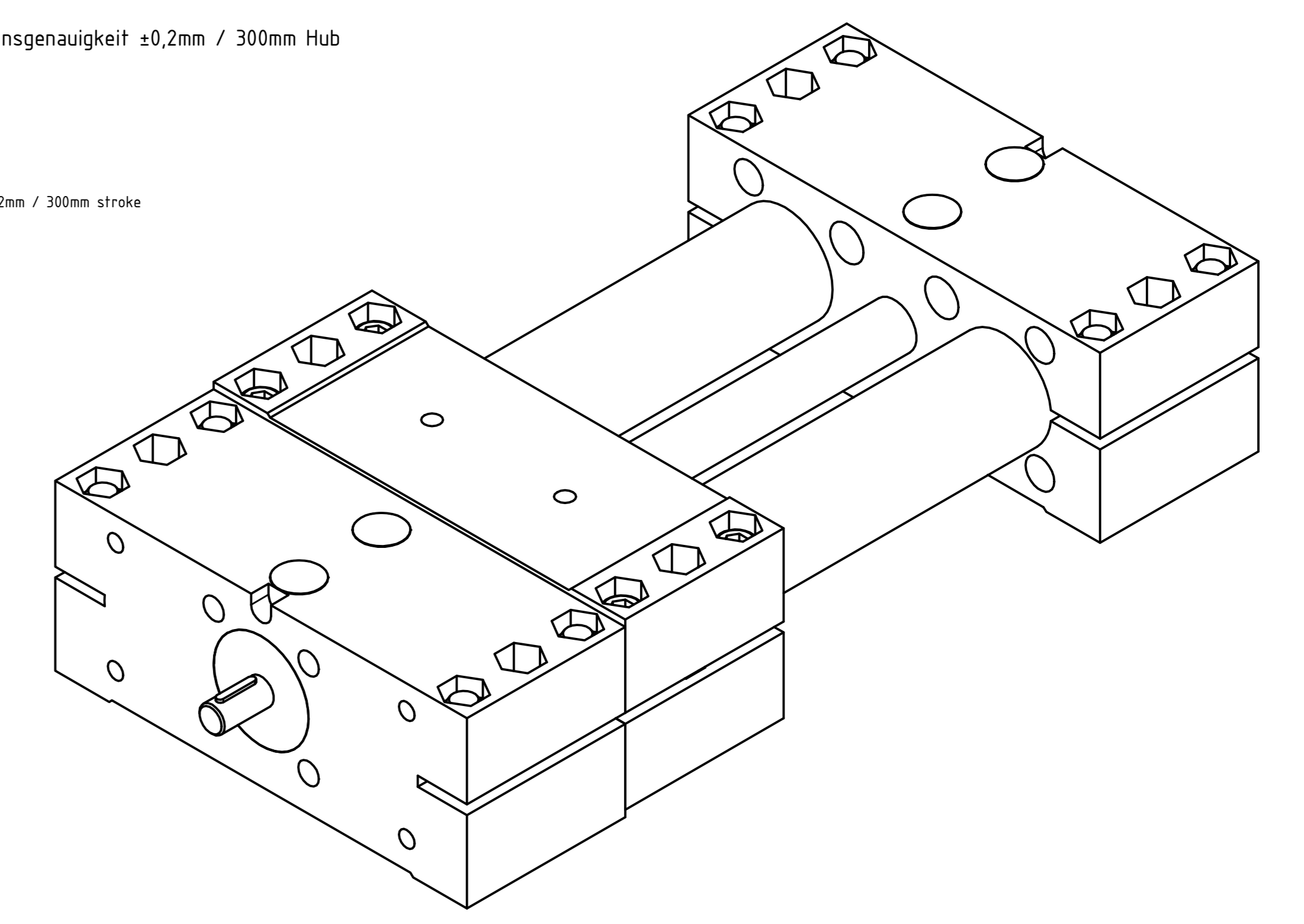
Rotgussleitmutter
 Stahlführungsrohr, verchromt, DIN 2391
 Stahlzylinderschrauben DIN 912, verzinkt
 Stahlsechskantmutter DIN 985, verzinkt
 Aluminiumendstück und Aluminiumschlitten:
 - kunststoffbeschichtet schwarz RAL9005, struktur matt
 - Befestigungs- / Aufbaufläche bearbeitet blank
 Stahltrapezgewindespindel blank, kugelgelagert, Positionsgenauigkeit ±0,2mm / 300mm Hub
 Gummilet guide nut
 Steel guide tube, chrome-plated, DIN 2391
 Steel cheese head screws DIN 912, galvanised
 Steel hexagon nut DIN 985, galvanised
 Aluminium end piece and aluminium slide
 - plastic-coated black RAL9005, textured matt
 - Mounting / mounting surface machined blank
 Steel trapezoidal threaded spindle bright, ball bearing, position accuracy ±0.2mm / 300mm stroke



STOXXparts des Norming		tolerance DIN2768-mk
Version	07.05.2011	Übersicht
Doppelrohr-Linearinheit, Einzelschlitten		
07000094000		3
weight =		scale 1:1

16	15	14	13	12	11	10	9	8	7	6	5	4	3	2	1																		
Artikel-Nr./article-no. STOXXparts	Variante/variant	d1 mm	l1 (Hub/Standardlänge stroke/standard length) mm	l1 (max. Hub/max. Auswahlänge max. stroke/max. selection length) mm	d (Gewindespindel / trapezoidal lead screw)	b mm	d2 mm	d3 mm	d5 mm	d6 mm	für Schrauben DIN 912 / for screws DIN 912	d7 mm	für Schrauben DIN 912 / for screws DIN 912	h1 mm	h2 mm	h3 mm	h4 mm	h5 mm	l2 (Gesamtlänge / total length) mm	l3 mm	l4 mm	m1 mm	m2 mm	m3 mm	m4 mm	m5 mm	m6 mm	m7 mm	m8 mm	m9 mm	S mm	Passfeder DIN 6885 / flat key DIN 6885	
07000094058	Linksgewinde / Wellenzapfen beidseitig left-hand thread / shaft journals on both sides	50	200	2760	TR20x4	72	12	M10	M8	8.5	13.5	M8	13.5	M8	72	76	4	38	1.2	3xb+l1	206	18	2xb+l1	184	150	46	50	46	62	13	15	13	A4x4x12
07000094059	Rechtsgewinde / Wellenzapfen einseitig right-hand thread / shaft journal one-sided	50	200	2760	TR20x4	72	12	M10	M8	8.5	13.5	M8	13.5	M8	72	76	4	38	1.2	3xb+l1	206	18	2xb+l1	184	150	46	50	46	62	13	15	13	A4x4x12
07000094060	Rechtsgewinde / Wellenzapfen beidseitig right-hand thread / shaft journals on both sides	50	200	2760	TR20x4	72	12	M10	M8	8.5	13.5	M8	13.5	M8	72	76	4	38	1.2	3xb+l1	206	18	2xb+l1	184	150	46	50	46	62	13	15	13	A4x4x12
07000094061	Linksgewinde / Wellenzapfen einseitig left-hand thread / shaft journal one-sided	50	300	2760	TR20x4	72	12	M10	M8	8.5	13.5	M8	13.5	M8	72	76	4	38	1.2	3xb+l1	206	18	2xb+l1	184	150	46	50	46	62	13	15	13	A4x4x12
07000094062	Linksgewinde / Wellenzapfen beidseitig left-hand thread / shaft journals on both sides	50	300	2760	TR20x4	72	12	M10	M8	8.5	13.5	M8	13.5	M8	72	76	4	38	1.2	3xb+l1	206	18	2xb+l1	184	150	46	50	46	62	13	15	13	A4x4x12
07000094063	Rechtsgewinde / Wellenzapfen einseitig right-hand thread / shaft journal one-sided	50	300	2760	TR20x4	72	12	M10	M8	8.5	13.5	M8	13.5	M8	72	76	4	38	1.2	3xb+l1	206	18	2xb+l1	184	150	46	50	46	62	13	15	13	A4x4x12
07000094064	Rechtsgewinde / Wellenzapfen beidseitig right-hand thread / shaft journals on both sides	50	300	2760	TR20x4	72	12	M10	M8	8.5	13.5	M8	13.5	M8	72	76	4	38	1.2	3xb+l1	206	18	2xb+l1	184	150	46	50	46	62	13	15	13	A4x4x12
07000094065	Linksgewinde / Wellenzapfen einseitig left-hand thread / shaft journal one-sided	60	300	2740	TR25x5	80	14	M10	M10	10.5	13.5	M8	16.5	M10	86	88	2	44	1.35	3xb+l1	240	19	2xb+l1	216	185	55	60	55	74	14	16.5	17	A5x5x16
07000094066	Linksgewinde / Wellenzapfen beidseitig left-hand thread / shaft journals on both sides	60	300	2740	TR25x5	80	14	M10	M10	10.5	13.5	M8	16.5	M10	86	88	2	44	1.35	3xb+l1	240	19	2xb+l1	216	185	55	60	55	74	14	16.5	17	A5x5x16
07000094067	Rechtsgewinde / Wellenzapfen einseitig right-hand thread / shaft journal one-sided	60	300	2740	TR25x5	80	14	M10	M10	10.5	13.5	M8	16.5	M10	86	88	2	44	1.35	3xb+l1	240	19	2xb+l1	216	185	55	60	55	74	14	16.5	17	A5x5x16
07000094068	Rechtsgewinde / Wellenzapfen beidseitig right-hand thread / shaft journals on both sides	60	300	2740	TR25x5	80	14	M10	M10	10.5	13.5	M8	16.5	M10	86	88	2	44	1.35	3xb+l1	240	19	2xb+l1	216	185	55	60	55	74	14	16.5	17	A5x5x16
07000094069	Linksgewinde / Wellenzapfen einseitig left-hand thread / shaft journal one-sided	60	400	2740	TR25x5	80	14	M10	M10	10.5	13.5	M8	16.5	M10	86	88	2	44	1.35	3xb+l1	240	19	2xb+l1	216	185	55	60	55	74	14	16.5	17	A5x5x16
07000094070	Linksgewinde / Wellenzapfen beidseitig left-hand thread / shaft journals on both sides	60	400	2740	TR25x5	80	14	M10	M10	10.5	13.5	M8	16.5	M10	86	88	2	44	1.35	3xb+l1	240	19	2xb+l1	216	185	55	60	55	74	14	16.5	17	A5x5x16
07000094071	Rechtsgewinde / Wellenzapfen einseitig right-hand thread / shaft journal one-sided	60	400	2740	TR25x5	80	14	M10	M10	10.5	13.5	M8	16.5	M10	86	88	2	44	1.35	3xb+l1	240	19	2xb+l1	216	185	55	60	55	74	14	16.5	17	A5x5x16
07000094072	Rechtsgewinde / Wellenzapfen beidseitig right-hand thread / shaft journals on both sides	60	400	2740	TR25x5	80	14	M10	M10	10.5	13.5	M8	16.5	M10	86	88	2	44	1.35	3xb+l1	240	19	2xb+l1	216	185	55	60	55	74	14	16.5	17	A5x5x16
07000094073	Linksgewinde / Wellenzapfen einseitig left-hand thread / shaft journal one-sided	60	500	2740	TR25x5	80	14	M10	M10	10.5	13.5	M8	16.5	M10	86	88	2	44	1.35	3xb+l1	240	19	2xb+l1	216	185	55	60	55	74	14	16.5	17	A5x5x16
07000094074	Linksgewinde / Wellenzapfen beidseitig left-hand thread / shaft journals on both sides	60	500	2740	TR25x5	80	14	M10	M10	10.5	13.5	M8	16.5	M10	86	88	2	44	1.35	3xb+l1	240	19	2xb+l1	216	185	55	60	55	74	14	16.5	17	A5x5x16
07000094075	Rechtsgewinde / Wellenzapfen einseitig right-hand thread / shaft journal one-sided	60	500	2740	TR25x5	80	14	M10	M10	10.5	13.5	M8	16.5	M10	86	88	2	44	1.35	3xb+l1	240	19	2xb+l1	216	185	55	60	55	74	14	16.5	17	A5x5x16
07000094076	Rechtsgewinde / Wellenzapfen beidseitig right-hand thread / shaft journals on both sides	60	500	2740	TR25x5	80	14	M10	M10	10.5	13.5	M8	16.5	M10	86	88	2	44	1.35	3xb+l1	240	19	2xb+l1	216	185	55	60	55	74	14	16.5	17	A5x5x16

Rotgussleitwfer
Stahlfhrungsrohr, verzinkt, DIN 2391
Stahlzylinderschrauben DIN 912, verzinkt
Stahlsechskanmutter DIN 985, verzinkt
Aluminiumendsfck und Aluminiumschlitten:
- kunststoffbeschichtet schwarz RAL9005, strukturmatt
- Befestigungs- / Aufbauflche bearbeitet blank
Stahltrapezgewindespindel blank, kugellagert, Positionsgenauigkeit ±0,2mm / 300mm Hub
General guide rail
Steel guide tube, chrome-plated, DIN 2391
Steel cheese head screws DIN 912, galvanised
Steel hexagon nut DIN 985, galvanised
Aluminum end piece and aluminum slide:
- plastic-coated black RAL9005, textured matt
- Mounting / mounting surface machined blank
Steel trapezoidal threaded spindle bright, ball bearing, position accuracy ±0.2mm / 300mm stroke



STOXXparts des Normmilitr		tolerance DIN2768-mk
Version	07.05.2011	Double-Rohr-Linearinheit, Einzelschlitten
Part No.	07000094000	4
Weight		scale 1:1