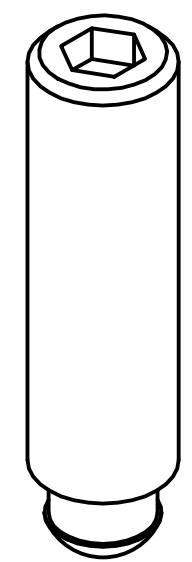
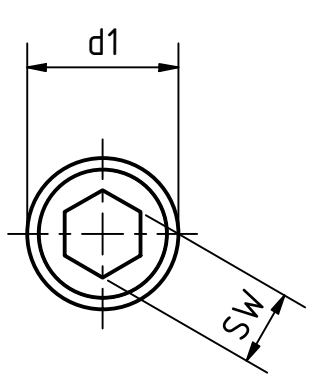
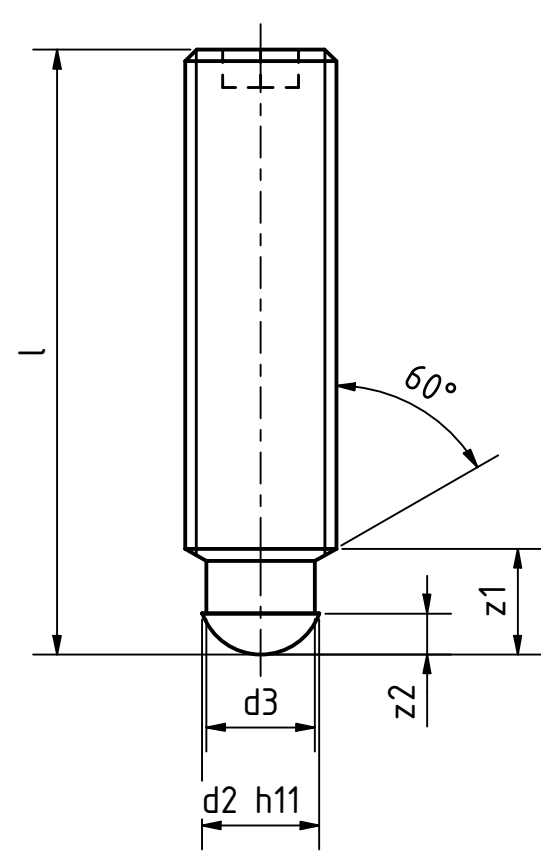


Artikel-Nr. SToxxparts	d1 mm	l mm	d2 mm	d3 mm	SW mm	z1 mm	z2 mm
01000292001	M10	45	8	7.2	5	9	4.5
01000292002	M10	50	8	7.2	5	9	4.5
01000292003	M10	55	8	7.2	5	9	4.5
01000292004	M10	60	8	7.2	5	9	4.5
01000292005	M10	65	8	7.2	5	9	4.5
01000292006	M10	80	8	7.2	5	9	4.5
01000292007	M12	100	8	7.2	6	10	4.5
01000292008	M12	50	8	7.2	6	10	4.5
01000292009	M12	60	8	7.2	6	10	4.5
01000292010	M12	65	8	7.2	6	10	4.5
01000292011	M12	70	8	7.2	6	10	4.5
01000292012	M12	80	8	7.2	6	10	4.5
01000292013	M16	100	12	11	8	12	5
01000292014	M16	125	12	11	8	12	5
01000292015	M16	65	12	11	8	12	5
01000292016	M16	70	12	11	8	12	5
01000292017	M16	75	12	11	8	12	5
01000292018	M16	80	12	11	8	12	5
01000292019	M20	100	15.5	14.4	10	14	5.5
01000292020	M20	125	15.5	14.4	10	14	5.5
01000292021	M20	150	15.5	14.4	10	14	5.5
01000292022	M20	80	15.5	14.4	10	14	5.5
01000292023	M20	90	15.5	14.4	10	14	5.5
01000292024	M6	30	4.5	4	3	6	2.5
01000292025	M6	35	4.5	4	3	6	2.5
01000292026	M6	40	4.5	4	3	6	2.5
01000292027	M6	45	4.5	4	3	6	2.5
01000292028	M6	50	4.5	4	3	6	2.5
01000292029	M8	35	6	5.4	4	7.5	3
01000292030	M8	40	6	5.4	4	7.5	3
01000292031	M8	45	6	5.4	4	7.5	3
01000292032	M8	50	6	5.4	4	7.5	3
01000292033	M8	60	6	5.4	4	7.5	3
01000292034	M8	70	6	5.4	4	7.5	3



Rev.	Änderungstext	Änderungsdatum	Änderungsstamm	Gen.
	Erstfreigabe			PJ

REVISIONSVERLAUF

<b>SToxx</b> parts				tolerance DIN2768-mk	
...der Normteiler					
	Datum	Name		Gewindestift mit Druckzapfen, Edelstahl	
Gezeichnet	21.09.2020	Dennis Bruder			
Kontroll					
Norm					
				01000292000	
				1	
				A3	
Status	Änderungen	Datum	Name	weight -	scale 1:1