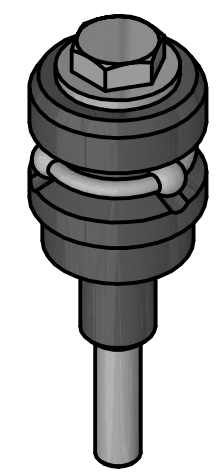
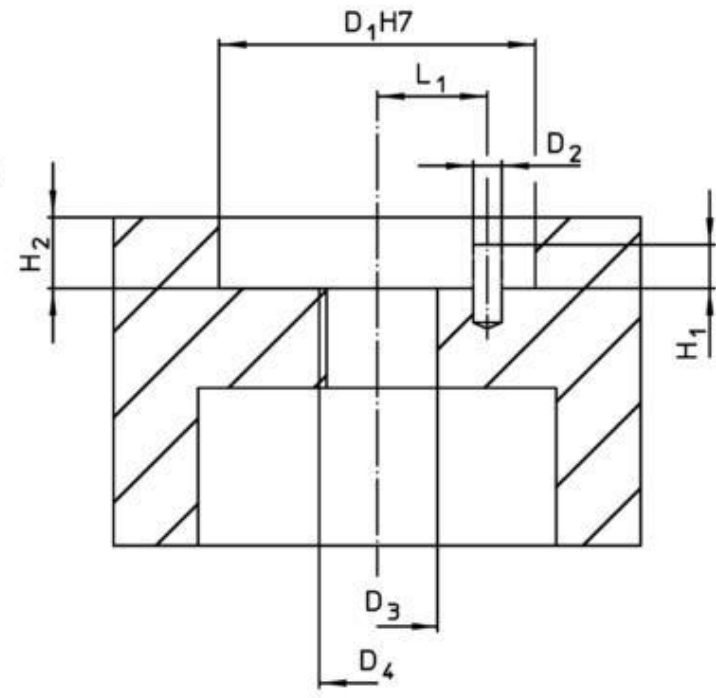
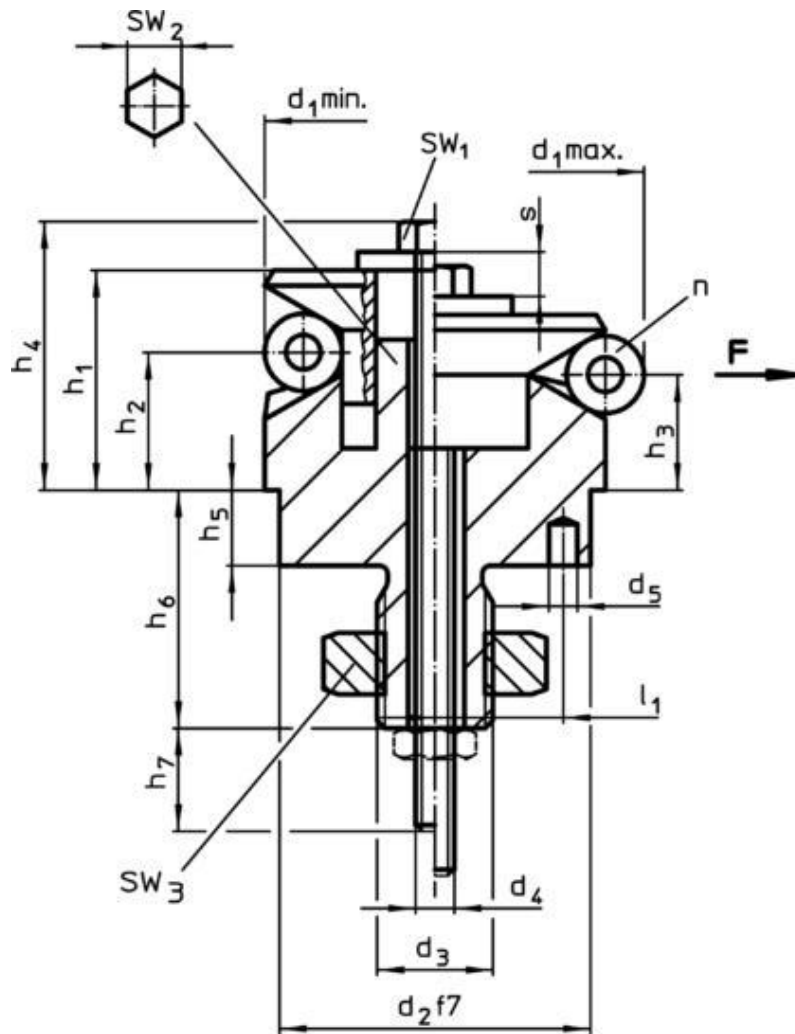


Artikel-Nr. STOXXparts	Abmessungen															Anzahl Kugeln n	Hub S [mm]	SW			Spann- kraft F max. [kN]	Anzugs- dreh- moment max. [Nm]	Aufnahmebohrung							Gewicht [g]
	d ₁ min.	d ₁ max.	d ₂ f7	d	d ₄	d ₅ +0.3	h ₁	h	h	h ₄ -2	h ₅	h ₆ +1	h ₇ ~	l ₁ ±0.1	Kugel ∅			SW	SW	SW			D ₁ H7	D	D	D	H	H ₂ +0.5	L ₁ ±0.1	
	[mm]																	[mm]												
17000281001	11.7	14.2	10	M5	M3	1.5	9.9	3.9	3.2	12.7	3.5	11	10	3.5	2.5	3	1.3	5.5	4	8	0.5	2	10	1.5	5	M5	2	3.5	3.5	12
17000281002	14.5	18.5	12	M6	M3	2	14.2	9.8	8.6	17	5.5	14.1	12	4.5	4	3	2.3	5.5	3	10	3.5	2	12	2	6	M6	2.5	5.5	4.5	21
17000281003	18.5	22.5	15	M8	M4	2.5	16.5	11.6	10.4	20.4	7.5	18.2	14	5.5	4	3	2.3	7	5	13	4	5	15	2.5	8	M8	3.5	7.5	5.5	45
17000281004	22.5	26.5	20	M10	M5	3	19.6	14.1	12.9	24.3	6	17.4	15	7	4	3	2.3	8	6	16	4.5	10	20	3	10	M10	3.5	6	7	77
17000281005	26.5	30.5	20	M10	M5	3	19.8	14.1	13	24.5	6	17.4	15	7	4	3	2.3	8	6	16	4.5	10	20	3	10	M10	3.5	6	7	96
17000281006	30.5	38.5	25	M12	M6	4	23.2	14.1	11.8	28.8	7	21.9	20	9	8	3	4.6	10	6	18	4.5	17	25	4	12	M12	3.5	7	9	140
17000281007	38.5	46.5	30	M12	M6	4	27.1	18	15.5	33	7.5	22.5	20	11	8	6	4.6	10	8	18	6.5	17	30	4	12	M12	4.5	7.5	11	246
17000281008	46.5	54.5	30	M12	M6	4	27.2	18	15.7	33.1	7.5	22.5	20	11	8	6	4.6	10	8	18	6.5	17	30	4	12	M12	6.5	7.5	11	327
17000281009	54.5	70.5	45	M14 x 1.5	M8	5	40.6	23.7	19.1	49.9	9	24.5	32	15	16	6	9.2	13	10	21	8	43	45	5	14	M14 x 1.5	6.5	9	15	650
17000281010	70.5	86.5	60	M16 x 1.5	M8	5	46.1	28.3	23.7	55.4	10	29.4	20	17	16	6	9.2	13	12	24	10	43	60	5	16	M16 x 1.5	6.5	10	17	1272
17000281011	86.5	102.5	60	M16 x 1.5	M10	5	51.2	30.3	25.7	61.6	10	29.4	25	25	16	6	9.2	16	12	24	12.5	79	60	5	16	M16 x 1.5	6.5	10	25	2042



STOXX parts		tolerance DIN2768-mk	
...der Normteile			
	Datum	Name	Zentrierspannelemente, mit Spannkugeln, Bedienung von unten
Gezeichnet	20.05.2020	Philipp Joos	
Kontrolliert	20.05.2020		
	Norm		
Erstfreigabe		21.05.2020	PJ
Rev.	Änderungstext	Änderungsdatum	Änderungsstamm
		Gen.	
17000281000		1	
weight N/A		scale 1:1	

6 5 4 3 2 1

D

C

B

A

6 5 4 3 2 1