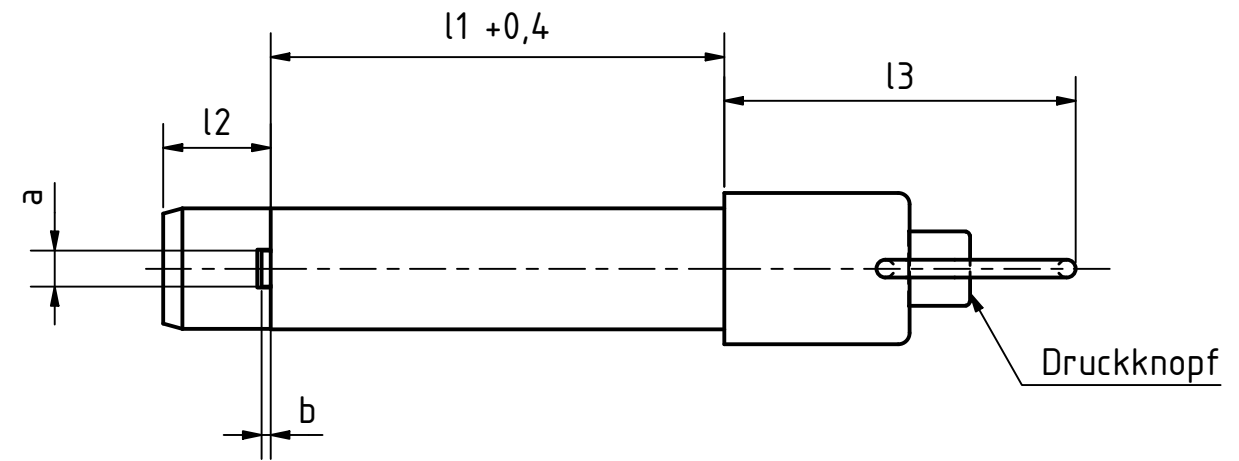
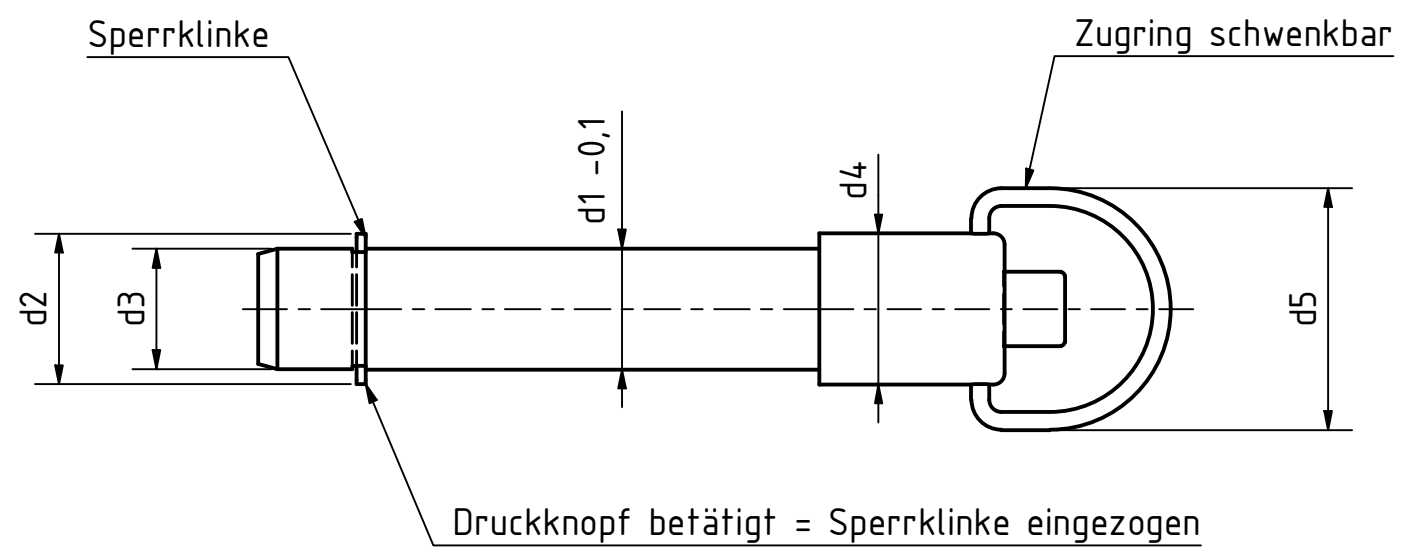


Artikel-Nr. SToxxparts	d1 mm	l1 mm	a mm	b mm	d2 mm	d3 mm	d4 mm	d5 mm	l2 mm	l3 mm
05000823001	10	100	3.3	1	12 +1	9.9	16	28	9.8	42
05000823002	10	110	3.3	1	12 +1	9.9	16	28	9.8	42
05000823003	10	120	3.3	1	12 +1	9.9	16	28	9.8	42
05000823004	10	15	3.3	1	12 +1	9.9	16	28	9.8	42
05000823005	10	20	3.3	1	12 +1	9.9	16	28	9.8	42
05000823006	10	25	3.3	1	12 +1	9.9	16	28	9.8	42
05000823007	10	30	3.3	1	12 +1	9.9	16	28	9.8	42
05000823008	10	35	3.3	1	12 +1	9.9	16	28	9.8	42
05000823009	10	40	3.3	1	12 +1	9.9	16	28	9.8	42
05000823010	10	45	3.3	1	12 +1	9.9	16	28	9.8	42
05000823011	10	50	3.3	1	12 +1	9.9	16	28	9.8	42
05000823012	10	60	3.3	1	12 +1	9.9	16	28	9.8	42
05000823013	10	70	3.3	1	12 +1	9.9	16	28	9.8	42
05000823014	10	80	3.3	1	12 +1	9.9	16	28	9.8	42
05000823015	10	90	3.3	1	12 +1	9.9	16	28	9.8	42
05000823016	12	100	3.8	1	14 +1	11.9	16	28	11.3	42
05000823017	12	110	3.8	1	14 +1	11.9	16	28	11.3	42
05000823018	12	120	3.8	1	14 +1	11.9	16	28	11.3	42
05000823019	12	20	3.8	1	14 +1	11.9	16	28	11.3	42
05000823020	12	25	3.8	1	14 +1	11.9	16	28	11.3	42
05000823021	12	30	3.8	1	14 +1	11.9	16	28	11.3	42
05000823022	12	35	3.8	1	14 +1	11.9	16	28	11.3	42
05000823023	12	40	3.8	1	14 +1	11.9	16	28	11.3	42
05000823024	12	45	3.8	1	14 +1	11.9	16	28	11.3	42
05000823025	12	50	3.8	1	14 +1	11.9	16	28	11.3	42
05000823026	12	60	3.8	1	14 +1	11.9	16	28	11.3	42
05000823027	12	70	3.8	1	14 +1	11.9	16	28	11.3	42
05000823028	12	80	3.8	1	14 +1	11.9	16	28	11.3	42
05000823029	12	90	3.8	1	14 +1	11.9	16	28	11.3	42
05000823030	16	100	4.8	1.2	19 +1	15.9	20	32	14.2	46.5
05000823031	16	110	4.8	1.2	19 +1	15.9	20	32	14.2	46.5
05000823032	16	120	4.8	1.2	19 +1	15.9	20	32	14.2	46.5
05000823033	16	130	4.8	1.2	19 +1	15.9	20	32	14.2	46.5
05000823034	16	140	4.8	1.2	19 +1	15.9	20	32	14.2	46.5



Edelstahlbolzen 1.4305, nichtrostend
 Edelstahlzugring 1.4310, nichtrostend
 Edelstahldruckfeder 1.4310, nichtrostend
 Edelstahlblechsperrklinke 1.4301, nichtrostend
 Edelstahlschieber und -druckknopf 1.4305, nichtrostend

SToxx parts		tolerance DIN2768-mk	
...der Normteile			
	Datum	Name	Edelstahlsteckbolzen , Edelstahlschieber
Gezeichnet	17.03.2021	Dennis Bruder	
Kontroll			
Norm			
REVISIONSVERLAUF		05000823000	
Rev.	Änderungstext	Änderungsdatum	Änderungsstamm
	Erstfreigabe		PJ
Status	Änderungen	Datum	Name
weight -		scale 1:1	

A

A

D

D

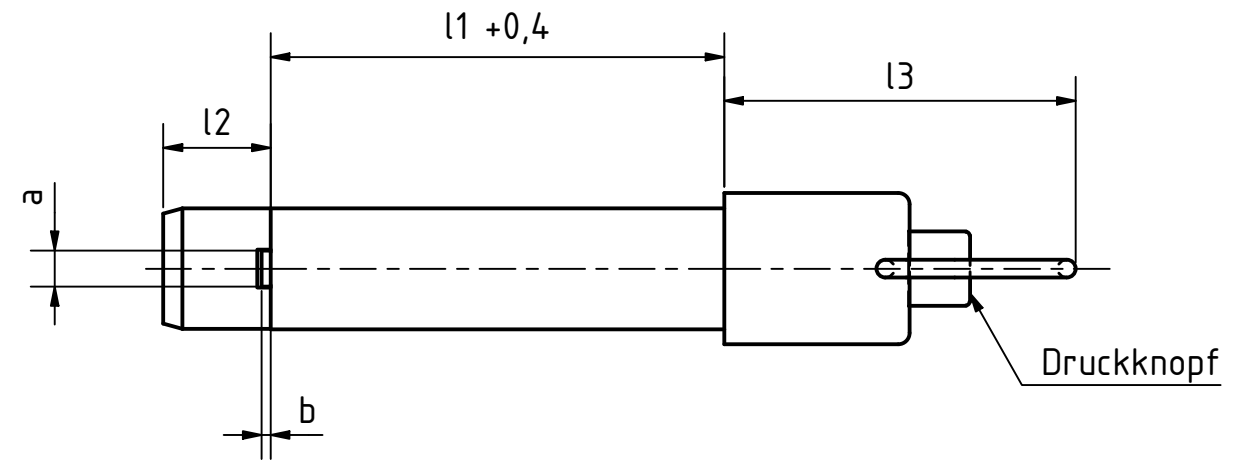
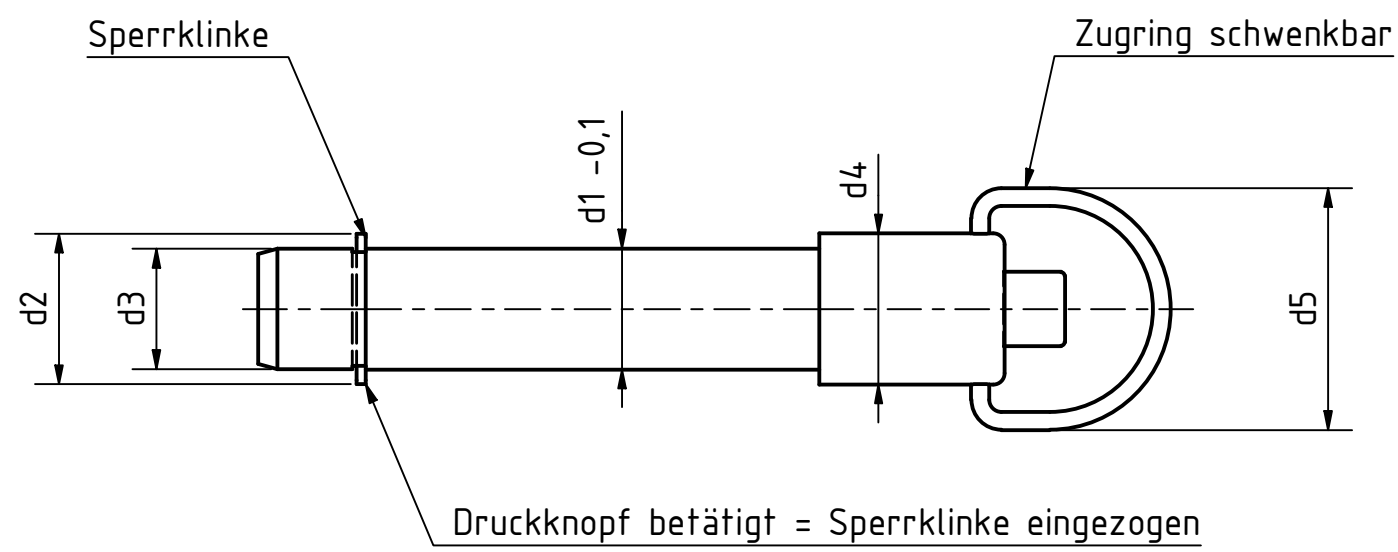
C

C

B

B

Artikel-Nr. SToxxparts	d1 mm	l1 mm	a mm	b mm	d2 mm	d3 mm	d4 mm	d5 mm	l2 mm	l3 mm
05000823035	16	150	4.8	1.2	19 +1	15.9	20	32	14.2	46.5
05000823036	16	30	4.8	1.2	19 +1	15.9	20	32	14.2	46.5
05000823037	16	35	4.8	1.2	19 +1	15.9	20	32	14.2	46.5
05000823038	16	40	4.8	1.2	19 +1	15.9	20	32	14.2	46.5
05000823039	16	45	4.8	1.2	19 +1	15.9	20	32	14.2	46.5
05000823040	16	50	4.8	1.2	19 +1	15.9	20	32	14.2	46.5
05000823041	16	60	4.8	1.2	19 +1	15.9	20	32	14.2	46.5
05000823042	16	70	4.8	1.2	19 +1	15.9	20	32	14.2	46.5
05000823043	16	80	4.8	1.2	19 +1	15.9	20	32	14.2	46.5
05000823044	16	90	4.8	1.2	19 +1	15.9	20	32	14.2	46.5
05000823045	6	16	2.3	0.5	7.5 +0.5	5.9	12	23	7	38
05000823046	6	20	2.3	0.5	7.5 +0.5	5.9	12	23	7	38
05000823047	6	25	2.3	0.5	7.5 +0.5	5.9	12	23	7	38
05000823048	6	30	2.3	0.5	7.5 +0.5	5.9	12	23	7	38
05000823049	6	35	2.3	0.5	7.5 +0.5	5.9	12	23	7	38
05000823050	6	40	2.3	0.5	7.5 +0.5	5.9	12	23	7	38
05000823051	6	45	2.3	0.5	7.5 +0.5	5.9	12	23	7	38
05000823052	6	50	2.3	0.5	7.5 +0.5	5.9	12	23	7	38
05000823053	6	60	2.3	0.5	7.5 +0.5	5.9	12	23	7	38
05000823054	6	70	2.3	0.5	7.5 +0.5	5.9	12	23	7	38
05000823055	6	80	2.3	0.5	7.5 +0.5	5.9	12	23	7	38
05000823056	8	100	2.8	0.6	10 +0.5	7.9	12	23	8.4	38
05000823057	8	16	2.8	0.6	10 +0.5	7.9	12	23	8.4	38
05000823058	8	20	2.8	0.6	10 +0.5	7.9	12	23	8.4	38
05000823059	8	25	2.8	0.6	10 +0.5	7.9	12	23	8.4	38
05000823060	8	30	2.8	0.6	10 +0.5	7.9	12	23	8.4	38
05000823061	8	35	2.8	0.6	10 +0.5	7.9	12	23	8.4	38
05000823062	8	40	2.8	0.6	10 +0.5	7.9	12	23	8.4	38
05000823063	8	45	2.8	0.6	10 +0.5	7.9	12	23	8.4	38
05000823064	8	50	2.8	0.6	10 +0.5	7.9	12	23	8.4	38
05000823065	8	60	2.8	0.6	10 +0.5	7.9	12	23	8.4	38
05000823066	8	70	2.8	0.6	10 +0.5	7.9	12	23	8.4	38
05000823067	8	80	2.8	0.6	10 +0.5	7.9	12	23	8.4	38
05000823068	8	90	2.8	0.6	10 +0.5	7.9	12	23	8.4	38



Edelstahlbolzen 1.4305, nichtrostend
 Edelstahzugring 1.4310, nichtrostend
 Edelstahl Druckfeder 1.4310, nichtrostend
 Edelstahlblechsperrklinke 1.4301, nichtrostend
 Edelstahlschieber und -druckknopf 1.4305, nichtrostend

SToxx parts		tolerance DIN2768-mk	
...der Normteile			
	Datum	Name	Edelstahlsteckbolzen , Edelstahlschieber
Gezeichnet	17.03.2021	Dennis Bruder	
Kontroll			
	Norm		
		05000823000	
		2	
		A3	
Status	Änderungen	Datum	Name
		weight -	
		scale 1:1	