



Wireless control at your fingertips, with your fingertips

Free your system tuning from the laptop and the cables! DeltaDirect works in conjunction with AudioCore to give you real time tuning and monitoring of all DSP functions via our bespoke iPad app.

Adjust filtering, tweak delays and gains, solo individual or groups of channels, and monitor the overall system performance with our beautifully simple intuitive interface that connects to your Delta DSP amplifiers via any standard WiFi router.

Set up grouping of inputs and outputs across the entire system using AudioCore, load your speaker presets (including FIR presets), and then cut loose to fine tune from the best position.

Intelligent copy and paste functionality plus advanced grouping architecture means you can connect independently to any network of amplifiers and retrieve the grouping structure, as well as honouring any system security in place.

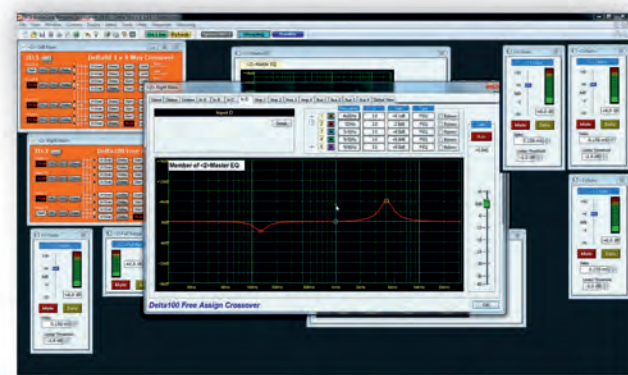
This makes DeltaDirect the ideal tuning tool for both dry hire and installation applications, as well as great during system set-up.



Ethernet Control in AudioCore : Amped Edition

AudioCore : Amped Edition offers seamless, swift control via a direct Ethernet connection, USB or RS485, or even via a combination of Ethernet+RS485 or USB+RS485. It provides comprehensive access to Delta Series DSP models, as well as XTA's DPA and APA amplifiers, and now features cabinet and individual channel driver preset recall. It is an exclusive version for amplification products only.

Supporting advanced features such as relative and absolute grouping across any amp channels (inputs or outputs) anywhere on the system, and the ability to browse and recall individual channel presets from speaker manufacturer libraries, make configuring your system quick and easy.



Grouping can be as simple or as complex as you want... from simply adding a group to tweak all your subs together for levels, adding a couple of inputs across different devices to an absolute group for system-wide EQ adjustments, or "nested" groups for multiple levels of control. You can even work offline and design the system to upload when you get connected to your amps.

DPanel-8 : Simple Secure Control

Free yourself from computers entirely and leave just the essentials - program memory recalls, gain adjustments, mutes, or system standby and even connect to external devices via the isolated relay. Powered from any Delta DSP amplifier (or external 5V) and using the RS485 bus to also control XTA processors, the DPanel is programmed by you to do what you want.

Also IR remote compatible for even more commands at your disposal!



Tel. +44(0)1404 44633 Fax. +44(0)1404 44660
MC² AUDIO | Units 6-8 Kingsgate | Heathpark Industrial Estate
Honiton | Devon | England | EX14 1YG

MC² AUDIO

www.mc2-audio.co.uk

Amplifiers | Networked audio | Signal processing

MC² AUDIO



δ Series
Processing and network audio



E Series
Lightweight high power touring



Ti Series
Network audio components



T Series
Stand-alone installation friendly



S Series
No compromise ultra high fidelity

www.mc2-audio.co.uk



DELTA 20 4 x 350W*

DELTA 100 DSP 4 x 3000W*
DELTA 80 DSP 4 x 2000W*
DELTA 40 DSP 4 x 1000W*

DELTA 120 2 x 4500W*
DELTA 100 4 x 3000W*
DELTA 80 4 x 2000W*
DELTA 40 4 x 1000W*



E475 4 x 850W*
E45 2 x 2500W*
E25 2 x 1350W*
E15 2 x 850W*



Ti1048 Installation audio management

Ti4250 4 x 260W*
Ti3500 2 x 1600W*
Ti2000 2 x 1025W*
Ti1500 2 x 875W*
Ti1000 2 x 550W*
Ti500 2 x 300W*



T-4-250 4 x 260W*
T-2000 2 x 1025W*
T-1000 2 x 550W*
T-500 2 x 300W*



S800 2 x 800W*
S1400 2 x 1250W*

δ Series

Combining new technology power amplification with the highest definition XTA DSP, the Delta Series offers performance and convenience at a whole new level. Powerful processing features such as Dante Networking*, Dynamic EQ and FIR filtering work alongside unique enhancements including 4 local and 4 aux processing channels (also supplied to the network), meaning a single Delta DSP amplifier can control a stereo 4-way system.

Non-DSP variants offer the same exceptionally transparent sound at different power levels, with the added convenience of a Dante network audio connection* to simply supply audio with a single network cable.



Dante

Configure and tune using a fast powerful combination of AudioCore (XTA's mature efficient control software) and DeltaDirect, the bespoke iPad app. Every aspect of a network of amplifiers can be controlled monitored, wirelessly.

Connect via a cable using USB, Ethernet, or RS485, or just plug into a WiFi router to go cable free.



E Series

Offering the highest power and yet lightest weights of all our ranges of amplifiers, the E Series has been designed to the same high standards of reliability and sound quality that our customers have come to expect of all MC² audio products.

All E Series amplifiers will deliver their rated power over the entire audio bandwidth, and a resonant switchmode power supply with a large reservoir gives extremely high peak power without any "bass sag".

Optical limiters, linked to the output current monitors and power supply, keep mains input and output currents within a safe operating area at all times, whilst maintaining transparent sonic performance.

*Dante network audio is a factory option for Delta Series DSP and Non-DSP amplifiers only.

Ti Series

Available in a variety of power outputs to cater for all live and installation needs, the Ti Series amplifiers represent the very best in sound quality, coupled with extensive remote control capabilities for monitoring and off-line set-up.

The Ti1048 is a 4 input 8 output signal processor that can provide not just speaker management, but also house equalisation and system protection functions, along with automated preset recalls and built-in simple remote control functionality.

Empowered By iCORE

iCore, has been developed to work alongside all Ti Series components (amplifiers and processors) and provides a centralised point for all control and monitoring. All amplifiers' performance can be monitored and operational parameters such as levels, mutes and power state are adjustable remotely. All processors (including support for XTA DP4 and 5 series and the DC1048) can be controlled with full real time adjustment of DSP settings, with intelligent copy and paste between devices.

T Series

Designed for use in a variety of applications in the fixed installation market, where sonic quality and reliability are the highest priorities, the high performance T Series uses complimentary AB bipolar output stages, combined with the unique MC² current driven floating drive stage and conventional analogue level controls.

The sound quality is maintained over a very wide range of load and temperature conditions. Sophisticated "side-chain" limiters prevent distortion and speaker damage, but are out-of-circuit until the onset of clipping.

S Series

Designed for use in the best studio monitoring environments, but equally at home in any application where transparency and "no compromise" performance are the focus, the S Series delivers the sound quality and reliability expected from MC².

The S Series utilises the best complimentary AB bipolar output stages, combined with the unique MC² current driven floating drive stage along with analogue level controls for minimal signal degradation.

In common with T Series, sophisticated "side-chain" limiters prevent distortion and speaker damage, but are out-of-circuit until the onset of clipping so do not compromise the signal path under normal working conditions.

A bespoke high fidelity shielded toroidal power supply, combined with intelligently controlled low noise fans, provide optimum conditions for the output stages ensuring the only thing you will ever hear is your sound.

MC²
AUDIO

www.mc2-audio.co.uk

*Power output measured with 4R load, all channels driven, continuous music with crest factor of 4.8 (14dB).
*Power output measured with 4R load, all channels driven, continuous sine wave at 1kHz.
For details of power measurement methods please refer to the Technical Support area of our website.