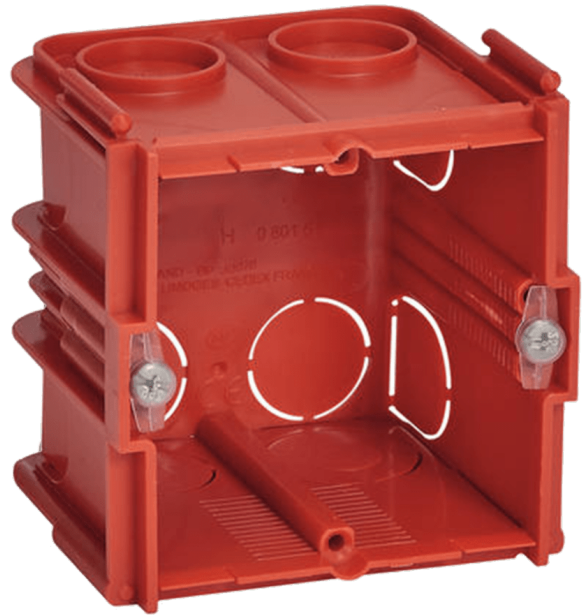


WB45SI/FS

Flush mount box for wall panel - Solid wall

Product information:

The WB45SI/SF wall boxes allow a flush mount in stone or concrete walls and installation for any standard-sized product such as matrix control panels, volume controllers, connection plates, ... WB45SI/FS is compatible with WP2xx series, NWPxxx series and NCP105. For compatibility with the NWP222 series, two WB45SI/FS shall be connected with each other.



Product Features:

Dimensions	71 x 71 x 63 mm (W x H x D)
Application	AV & IT
Series	Bulk & Accessories