



CP45XLMS

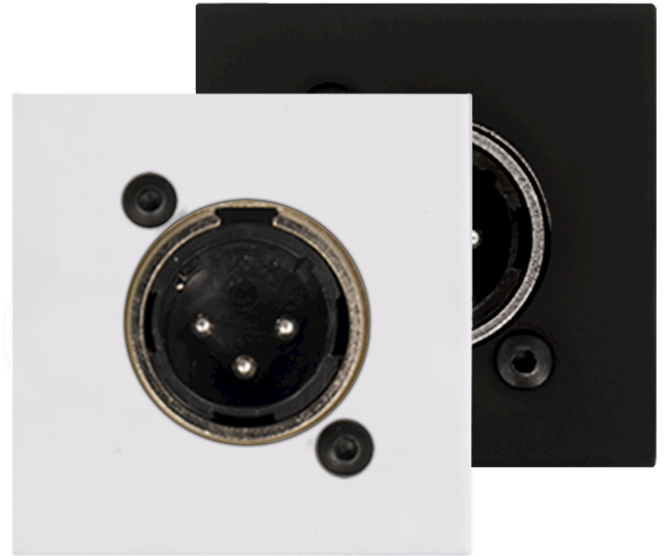
Connection plate XLR male 45 X 45 mm - solderless

Product information:

Connection plate with D-size 3-pole male XLR connector, designed to be used with electrical flush mounting boxes for 45 x 45 installation materials. The existing range of CP45 solderless panels are not compatible with WB45 surface mount boxes.

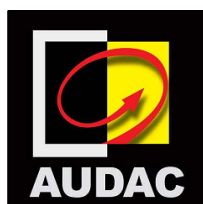
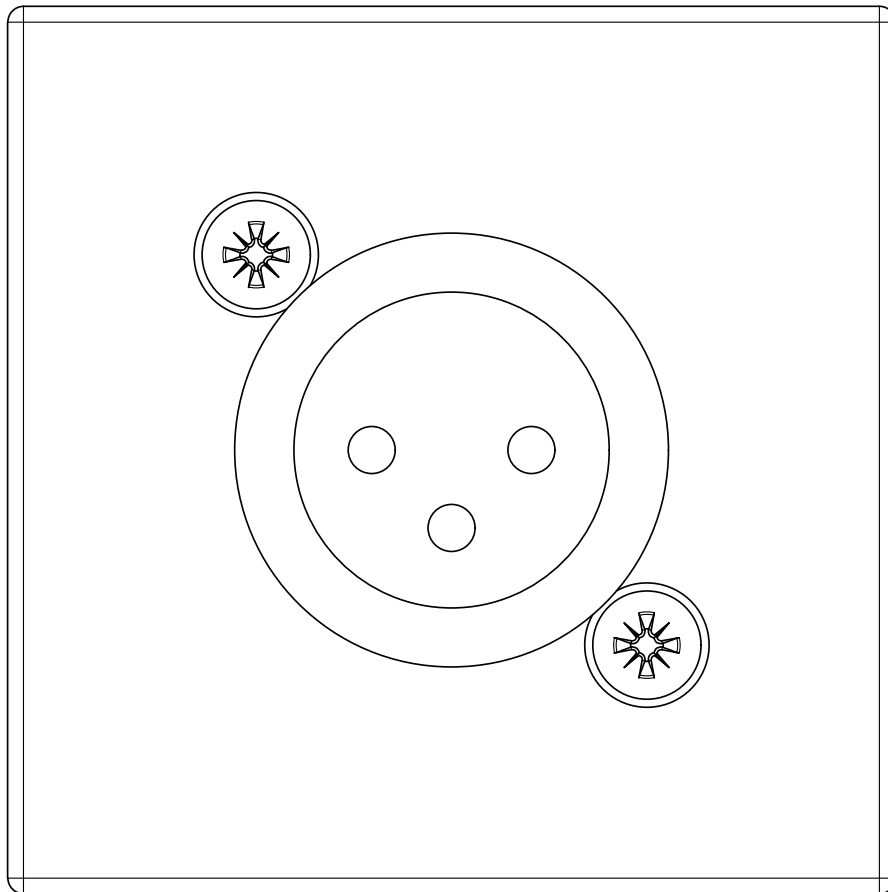
Available in Black (/B) & White (/W).

(Mounting frame and cover plate not included)



Variants:

- CP45XLMS/B - Black
- CP45XLMS/W - White



CP45XLMS

Product description:
CONNECTION PLATE - XLR MALE -
SOLDERLESS - 45X45MM

Weight:
0,04 kg

Outer dimensions:
(w x h x d)
45 x 45 x 25

Unit height:
N/A