

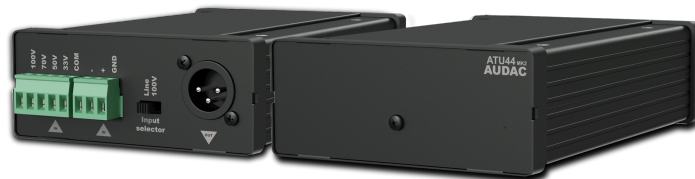


# ATU44

## Universal input adapter

### Product information:

The ATU44 is a universal input adapter unit for conversion between various audio level signals, offering a wide variety of connection and extension possibilities to audio systems. The speaker level input features various taps for 100V, 70V, 50V and 33V audio levels, while a balanced line input allows conversion between balanced and/or unbalanced line level audio signals. A typical application example is the conversion of any loudspeaker level audio signal to balanced or unbalanced line level signals. Any type of loudspeaker level signal can get applied to its input. This can be useful for expansion of any constant voltage distributed audio system and feeding the transformed output to an additional amplifier. Another typical application is connection of recording equipment on loudspeaker lines. Using the galvanic isolation between all the in & outputs, it can be used as an audio isolation solution, solving hum and buzz problems caused by ground loops. The front panel switch allows input signal selection between line or loudspeaker level input, while all inputs are connected using terminal block connectors. The line output is connected using a male XLR connector. A variety of optionally available mounting brackets for the AUDAC S-Box product range are allowing desk, closet or 19" equipment rack installation.



### System specifications:

Inputs	100V, 70V, 50V, 33V Audio	Type	1 x 100V, 70V, 50V, 33V audio inputs
		Connector	5-pin Euro Terminal Block (Pitch - 5.08 mm)
	Balanced Mono	Type	1 x Balanced Mono Line
		Connector	3-pin Euro Terminal Block (Pitch - 5.08 mm)
Outputs	Type		Balanced Line level audio outputs
	Connector		XLR male

### Product Features:

Dimensions		108 x 44 x 165 mm (W x H x D)
Weight		0.450 kg
Colours		Black
Construction		Aluminum
Accessories	Optional	MBS1xx Wall mounting brackets

Shipping & Ordering:

Packaging	Cardboard box
Shipping weight & volume	0.770 kg - 0.0078 Cbm

Architects’ and Engineers’ Specifications:

The input adapter unit shall be an universal type, housed in a modular S-Box™ enclosure. The functions shall include conversions between various types of audio level signals, including connections for 100V, 70V, 50V and 33V speaker lines as well as balanced and unbalanced line level inputs. A galvanic isolation shall be offered between the in and output circuitry allowing the unit being used as audio isolation solution, solving hum and buzz problems caused by ground loops. Other typical applications shall include conversion of loudspeaker level audio signals to balanced or unbalanced audio signals, allowing expansion of any distributed audio systems. All input connections shall be made using terminal block connectors while the balanced line output signal is connected using a female XLR connector. A input selection switch allows selection between speaker or line level inputs. The device shall be a passive unit which operates without application of any external power source. The enclosure shall be an S-Box™ modular aluminum enclosure with dimensions 108 x 44 x 165 mm which can be easily mounted and hidden using an optional mounting brackets and the weight shall not exceed 0.45 Kg.

