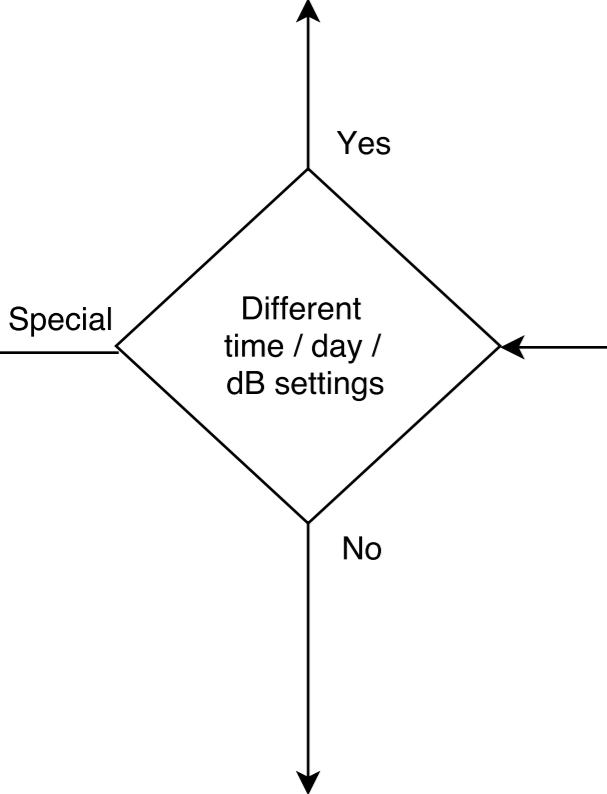
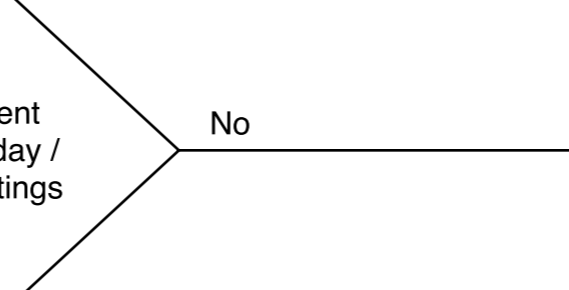
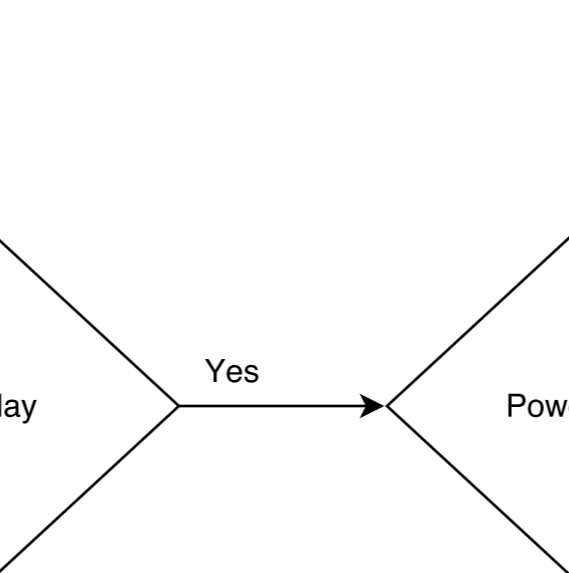
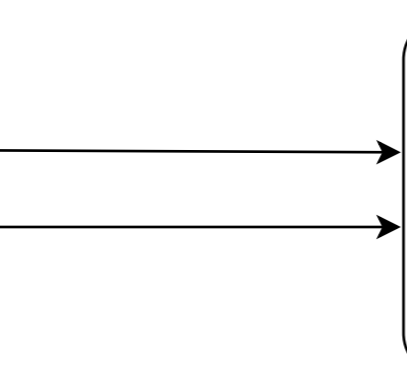
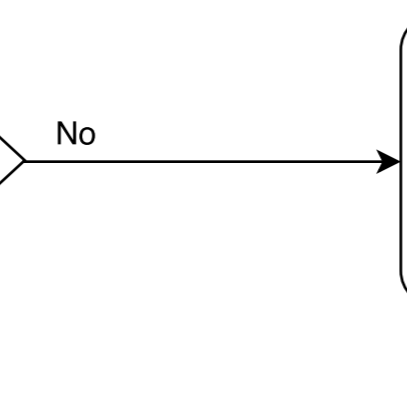
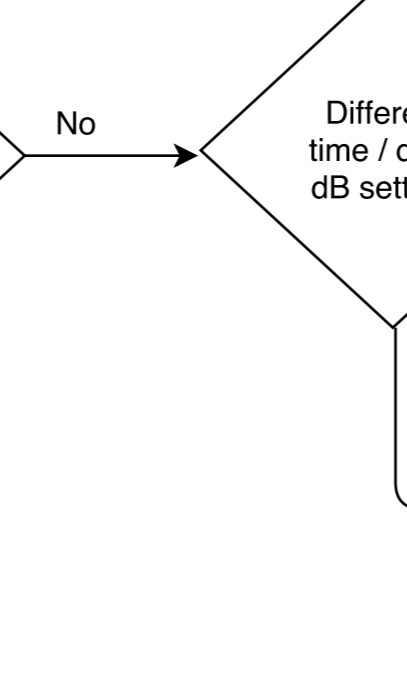
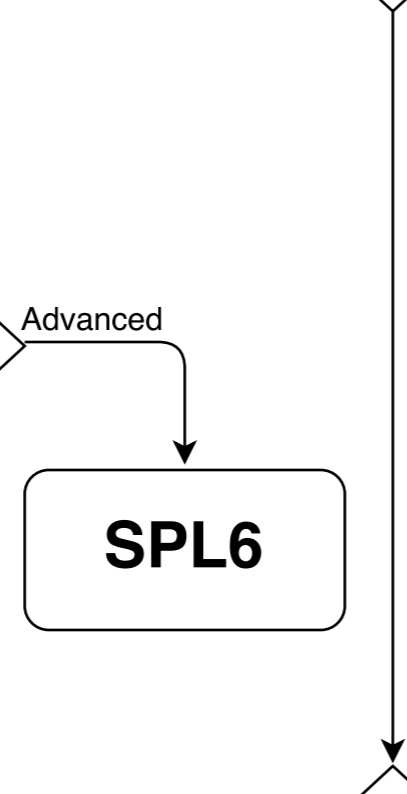
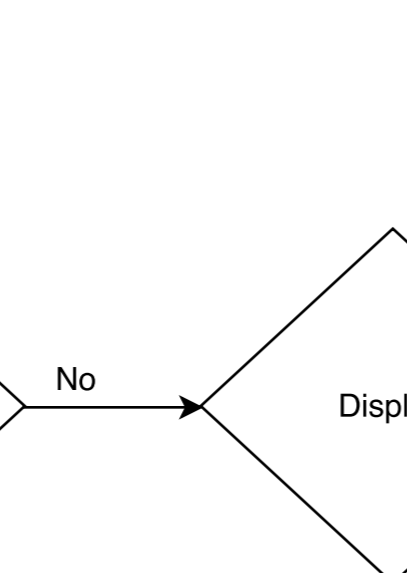
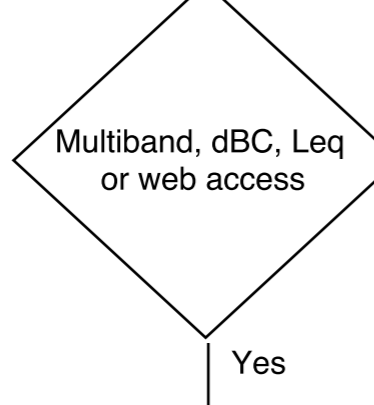
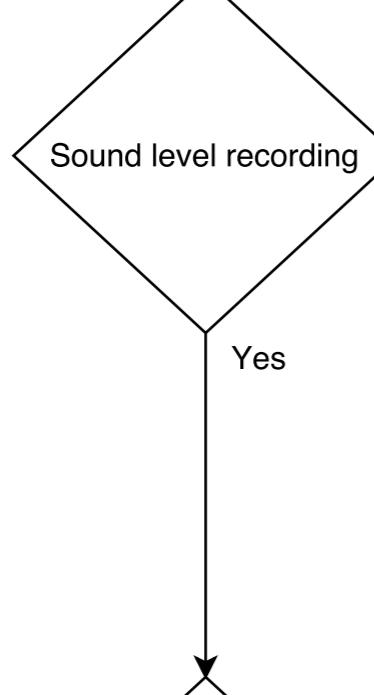
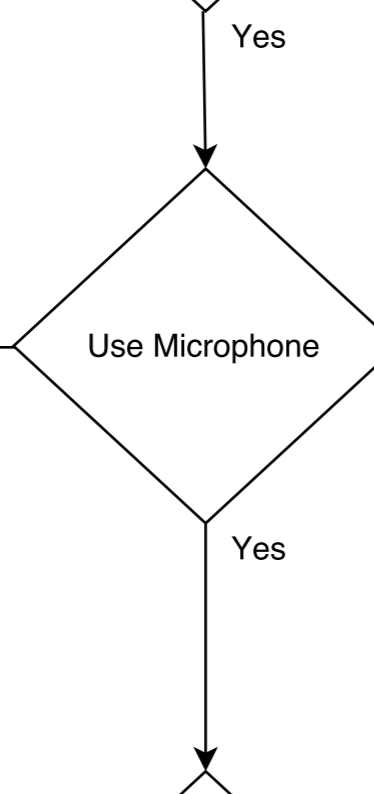
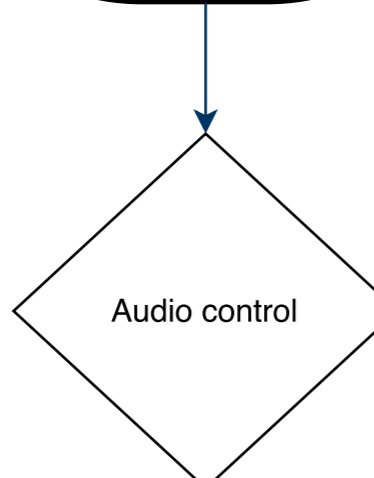


The SPL2 is a standard high quality line level limiter. On exceeding the maximum input level the SPL2 will adjust the output level to ensure no limit is exceeded. Included are time slots to allow different dB values over different times and days



The SPL2 is a standard high quality line level limiter. On exceeding the maximum input level the SPL2 will adjust the output level to ensure no limit is exceeded.

start



The SPL5 is an advanced high quality line level limiter using a measurement microphone. On exceeding the maximum input level the SPL5 will adjust the output level to ensure no limit is exceeded. Included are time slots to allow different dB values over different times and days. The SPL5 not only limits, but also records all measured values. Afterwards these dB values can be stored onto a computer.

The SPL6 is the most advanced high quality line level limiter using a measurement microphone. On exceeding the maximum input level the SPL6 will adjust the output level to ensure no limit is exceeded. It can automatically ignore the microphone signal to prevent audience influencing the limiter.

The SPL6 not only measures and limits in dBA, but also in dBC, dB-peak and can limit 10 different bands adjustable independently.

Included are time slots to allow different dB values over different times and days. The SPL6 not only limits, but also records all measured values. Afterwards these dB values can be stored onto a computer.

SPL-D2

The SPL-D2 is a stand alone display that measures in dB, dBA or dBC.

The SPL-D2 can also be linked to the SPL5 and SPL6 to act as slave display.

SPL-D2 + SRL-1

The SPL-D2 is a stand alone display that measures in dB, dBA or dBC.

The SPL-D2 can be linked to the SRL-1 to act as power cutter with an external warning light.

SPL-3 (+ SSR)

The SPL3 is a standard high quality line level limiter using a measurement microphone. On exceeding the maximum input level the SPL3 will adjust the output level to ensure no limit is exceeded.

SPL-3TS (+ SSR)

The SPL3TS is a standard high quality line level limiter using a measurement microphone. On exceeding the maximum input level the SPL3TS will adjust the output level to ensure no limit is exceeded. Included are time slots to allow different dB values over different times and days.